



Exam : 642-053

Title : Routing and Switching SE/FE Exam

Ver : 10.10.06

QUESTION 1:

You have decided to change the IP address of the inside network on a Cisco 800 broadband routing using CRWS to 192.168.5.0/24 with an IP address on the router's inside interface of 192.168.5.1/24. You have made no manual changes to the configuration.

What will the IP addressing look like on the router on the inside interface?

- A. There will be one address on the inside interface of 192.168.5.1
- B. There will be a 10.x.x.x address on the inside interface as a primary and 192.168.5.1 will be secondary.
- C. There will be a 192.168.5.1 address on the inside interface as a primary and a 10.x.x.x address as secondary.
- D. There will be a 10.x.x.x address on the main inside interface and a sub-interface will have been created with the 192.168.5.1 address installed on it.

Answer: B

QUESTION 2:

Which process plays a major role the creation of the CEF adjacency table?

- A. Address Resolution Protocol RRP
- B. PDU header rewrite
- C. NetFlow switching
- D. Hello packet exchange

Answer: A

QUESTION 3:

Match the Multilayer Switching term to the correct definition.

Select from these	Definition	Place here
MLS SE	Cisco device with a route processor that supports MLS	Place here
MLS Flow	Sequence of packets that share Layer 3 and Layer 4 information	Place here
MLSP	Protocol used to communicate MLS information	Place here
MLS RP	Maintains a Layer 3 switching table (Layer 3 MLS cache)	Place here

Answer:

Select from these	Definition	Place here
	Cisco device with a route processor that supports MLS	MLS RP
	Sequence of packets that share Layer 3 and Layer 4 information	MLS Flow
	Protocol used to communicate MLS information	MLSP
	Maintains a Layer 3 switching table (Layer 3 MLS cache)	MLS SE

QUESTION 4:

Which statement about multilayer switching is true?

- A.All Layer 3 routing logic is executed in ASICs on the switch.
- B.The MLS switch software is enhanced to take over all functions of the router.
- C.The switch caches the ARP table, routing table, and access lists with frequent updates from the router.
- D.The MLS switch compares incoming packets with cached Layer 3 information and forwards it to the appropriate port.

Answer: D

QUESTION 5:

What is the default aging time for MLS cache entries for which a flow is established?

- A.3 seconds
- B.64 seconds
- C.128 seconds
- D.256 seconds
- E.300 seconds

Answer: D

QUESTION 6:

What is the purpose of multilayer switching XTAGs?

- A.To associate an access list to a connection.
- B.To assign a switch port to an incoming packet.
- C.To distinguish different flows from a single source.
- D.To distinguish the MAC addresses of multiple MLS-RPs.

Answer: D

QUESTION 7:

Which multilayer switching concept determines how entries are created in the MLS cache?

- A.HSRP
- B.XTAGs
- C.Trunking
- D.Flow masks
- E.Tag switching

Answer: D

QUESTION 8:

The multilayer switching process is based on which concept?

- A.Switch once, route many
- B.Route once, switch many
- C.Route when you can, switch when you must
- D.Separate the functions of routing and switching

Answer: B

QUESTION 9:

Which three are contained in MLS-RP advertisements? (Choose three)

- A.Topology changes
- B.ARP cache changes
- C.Access list information
- D.Route additions and deletions
- E.The MAC addresses used by the MLS-RP interfaces

Answer: C, D, E

QUESTION 10:

When does the MLS-SE create a candidate MLS cache entry? (Choose two)

- A.When it receives a TCP SYN packet.
- B.When an MSL cache entry did not exist for the flow.
- C.When the frame was destined for the MLS-RP MAC address.
- D.After it forwards a pre-determined number of frames for the same flow.
- E.When it receives an MLSP message from the MLS-RP to create a candidate entry.

Answer: B, C

QUESTION 11:

Which Native IOS feature supports a forwarding approach that eliminates the supervisor from touching a frame for forwarding decisions?

- A.FIB
- B.MLS
- C.CEF
- D.DCEF

Answer: C

QUESTION 12:

Using switch clustering, how many ports can users manage from a single IP address?

- A.240
- B.380
- C.500

D.680
E.800

Answer: B

With Cisco Switch Clustering, users can manage over 380 ports from a single IP address, and connect up to 16 switches, regardless of physical location, with a broad range of Ethernet, Fast Ethernet, and Gigabit Ethernet media

<http://www.cisco.com/en/US/products/hw/switches/ps637/index.html>

QUESTION 13:

Which statement describes the term "multilayer switching"?

- A.switches that operate at the access, distribution, and core layer of the design model
- B.an OSI Layer 1 and 2 bridging technique
- C.a technique to provide hardware switching of Layer 3unicastpackets
- D.a flow-based Layer 3 packet routing methodology

Answer: C

QUESTION 14:

Which command configures a default gateway on a Catalyst 3500XL switch?

- A.Switch(config) ip route ip address
- B.Switch(config) set ip route address
- C.Switch(config) ip route-default-gateway ip address
- D.Switch(enable) set default-gateway ip address

Answer: D

QUESTION 15:

Whichmethod of layer 3 switching uses a forwarding information base?
(FIB)

- A. Route caching
- B. Flow-based switching
- C. Demand-based switching
- D.Topologi-based switching

Answer: D

Note:CEF is a topology-based forwarding model in which all routinginformation is prepopulatedinto a forwarding information base (FIB).As a result of theprepopulationof routing information, Catalystswitches can quickly look up routing information such as IPadjacencies and next-hop IP and MAC addresses.

QUESTION 16:

What does a half-open TCP session on the Cisco IOS Firewall mean?

- A.Session was denied.
- B.Firewall detected return traffic.
- C.Session has not reached the established state.
- D.Three-way handshake has been completed.

Answer: C

QUESTION 17:

What does CBAC on the Cisco IOS Firewall do with the application-layer protocol session information it gets from TCP and UDP packets?

- A.Creates temporary openings in the firewall's ACLs to allow return traffic and additional data connections for permissible sessions.
- B.Provides additional visibility at intranet, extranet, and Internet perimeters.
- C.Protects the network from internal and external attacks and threats.
- D.Creates specific security policies for each user.

Answer: A

QUESTION 18:

If you want Layer 4 information to be included in the MLS cache entries, which flow mask should you use?

- A.IP-flow
- B.Destination-IP
- C.Source-Destination-IP
- D.Layer 4 information is included by default.

Answer: A

QUESTION 19:

Which two parameters are distributed by VTP advertisements? (Choose two)

- A.VTP mode
- B.VLAN names
- C.VLAN description
- D.VTP configuration revision number

Answer: B, D

QUESTION 20:

Which statement is true about VTPs and VLAN consistency?

- A. Routers assist in propagating VTP information to ensure consistency.
- B. A switch can reside in multiple VTP domains to ensure no duplication.
- C. A switch listens to VTP advertisements from its own domain and other domains.
- D. A switch listens to VTP advertisements from its own domain and ignores other domains.

Answer: D

QUESTION 21:

Which DTP switchportmode parameter sets the switch port actively send and respond to DTP negotiation frames?

- A. access
- B. trunk
- C. no negotiate
- D. dynamic desirable
- E. dynamic auto

Answer: D

Note: switchportmode dynamic desirable: Makes the interface actively attempt to convert the link to a trunking link. The interface becomes a trunk interface if the neighboring interface is set to trunk, desirable, or auto mode.
switchportmode dynamic auto: Makes the interface convert the link to a trunking link if the neighboring interface is set to trunk or desirable mode. This is the default mode for all Ethernet interfaces.

QUESTION 22:

Which trunking mode prevents DISL or DTP frames from being sent out of a trunk link?

- A. On
- B. Auto
- C. Desirable
- D. None negotiate

Answer: D

QUESTION 23:

What are two functions of VTP? (Choose two)

- A. It propagates global VLAN information.
- B. It maps mixed-media to Ethernet VLANs.
- C. It sets trunk priority levels of adjacent switches.
- D. It adjusts VLAN interswitch links for parallel load sharing.
- E. It maps the noncontiguous switch fabric across the global VLAN.

Answer: A, B

QUESTION 24:

What are two methods to maintain a consistent VLAN database in a VTP domain? (Choose two)

- A. Do not configure any switches as a VTP server.
- B. Ensure that all switches not authorized to make changes are in Client mode.
- C. Always configure switches using VTP server mode when adding them to the existing network.
- D. Allow only one VTP server in each domain so that adding and deleting VLANs can be centralized to one location.

Answer: B, D

QUESTION 25:

Which VTP information does a Catalyst switch advertise on its trunk ports when using VTP? (Choose two)

- A. VTP mode
- B. STP root status
- C. Negotiation status
- D. Management domain
- E. Configuration revision number

Answer: D, E

QUESTION 26:

What is advertised by a Catalyst switch in a VTP domain?

- A. The VLAN ID of all known VLANs, the management domain name, and the total number of trunk links in the switch.
- B. The VLAN ID of all known VLANs, a 1-bit canonical format (CFI Indicator), and the switch configuration revision number.
- C. The management domain name, the switch configuration revision number, the known VLANs, and their specific parameters.
- D. A 2-byte TPID with a fixed value of 0x8100 for the management domain number, the switch configuration revision number, the known VLANs, and their specific parameters.

Answer: C

QUESTION 27:

Which trunking mode prevents DISL or DTP frame from being sent out of a trunk link?

- A. On
- B. Auto
- C. Desirable
- D. Nonegotiate

Answer: D

QUESTION 28:

You are configuring a VLAN trunk over Fast Ethernet.

Which trunking mode enables the port to become a trunk if the link partner requests it?

- A.Auto
- B.Negotiate
- C.Designate
- D.Nonegotiate

Answer: A

QUESTION 29:

You must configure an Ethernet trunk to operate in 802.1Q mode between two Cisco switches.

What can cause the trunk to operate incorrectly?

- A.An identical duplex at each end of the link.
- B.An identical speed at each end of the link.
- C.A different native VLAN parameter at each end of the link.
- D.A compatible trunking mode shared by the ports connecting the link at either end.

Answer: C

QUESTION 30:

Some Cisco Supervisor Engines have modular Uplink ports so that a module can be selected to provide an appropriate level of bandwidth. Which two features are valid on a 2-port 1000Base-SX or 1000Base-LX modular Uplink module? (Choose two)

- A.10/100 Auto sensing.
- B.FastEtherchannel.
- C.ISL.
- D.802.1Q/P.
- E.L3 rewrite.

Answer: C, D

QUESTION 31:

IEEE 802.1Q encapsulation?

- A. 1496
- B. 1500
- C. 1518
- D. 1522
- E. 1548

Answer: D

Note: IEEE 802.1q uses an internal tagging mechanism which inserts a 4 byte tag field in the original Ethernet frame itself between the Source Address and Type/Length fields. Since the frame is altered, the trunking device recomputes the frame check sequence (FCS) on the modified frame. The 802.1q tag is 4 bytes, hence the resulting Ethernet frame can be as large as 1522 bytes. The minimum size of the Ethernet frame with 802.1q tagging is 68 bytes. ISL: The biggest implication for systems using ISL encapsulation is that the encapsulation is a total of 30 bytes and fragmentation is not required. Therefore, if the encapsulated packet is 1518 bytes long, the ISL packet will be 1548 bytes long for Ethernet. Additionally, if packets other than Ethernet packets are encapsulated, the maximum length can be greatly increased. This length change must be considered when evaluating whether a topology can support ISL packets size.

QUESTION 32:

Which protocol is an open standard for transporting traffic from multiple VLANs between connected Layer 2 devices?

- A. 802.11B
- B. spanning-tree
- C. 802.1Q
- D. ISL
- E. VTP
- F. Q.921

Answer: C

QUESTION 33:

Which three statements are correct with regard to the IEEE 802.1Q standard? (Choose three)

- A. The packet is encapsulated with a 26 byte header and a 4 byte FCS.
- B. The IEEE 802.1Q frame format adds a 4 byte field to an Ethernet frame.
- C. The IEEE 802.1Q frame retains the original MAC destination address.
- D. The IEEE 802.1Q frame uses multicast destination of 0x01-00-0c-00-00.
- E. Protocol uses point-to-point connectivity.
- F. Protocol uses point-to-multipoint connectivity.

Answer: B, C, E

QUESTION 34:

What are three valid combinations of trunk modes for ports configured as link partners? (Choose three)

- A. On/On
- B. On/Auto
- C. Auto/Auto
- D. Desirable/Auto
- E. Nonegotiate/Desirable

Answer: A, B, D

QUESTION 35:

Which link is capable of transporting more than one VLAN through a single switch port?

- A.Ethernet
- B.802.1d trunk
- C.802.1q trunk
- D.multispanlink

Answer: C

QUESTION 36:

What is a reason for creating VLANs on switches?

- A.To simplify management
- B.To simplify configuration
- C.To enhance Layer 2 functionality
- D.To create smaller broadcast domains

Answer: D

QUESTION 37:

Which technology allows a service provider to support overlapping customer VLAN Ids over transparent LAN services?

- A.802.1q tunneling
- B.ATM
- C.SDH
- D.IP+Optical

Answer: A

QUESTION 38:

What is the method used to filter traffic being bridged within a VLAN?

- A.Ethernet maps
- B.routerACLs
- C.VLAN maps
- D.IPACLs

Answer: C

QUESTION 39:

Which device allows communication between VLANs?

- A.IP translator

- B.route processor
- C.switching engine
- D.VLANinterswitch

Answer: B

QUESTION 40:

A VLAN, implemented in switching equipment, corresponds to which concept in legacy network equipment?

- A.VTP domain
- B.LAN segment
- C.routed network
- D.ISL trunk interface

Answer: B

QUESTION 41:

Which statements are true about VLANs? (Choose two.)

- A.VLANs have connected members located anywhere in the switched network.
- B.VLANs improve network segmentation by determining the next network point to which a frame should be forwarded.
- C.VLANs allow a Layer 1 protocol to determine intelligently the best path to a destination when multiple paths exist.
- D.VLANs solve the scalability problems found in large, flat networks by dividing the network into smaller broadcast domains or subnets.

Answer: A, D

QUESTION 42:

How many VLANs can a single RSM support?

- A.1
- B.16
- C.256
- D.1024

Answer: C

QUESTION 43:

What is a reason for aggregating VLANs on switches?

- A.to simplify management
- B.to simplify configuration
- C.to enhance Layer 2 functionality

D.to create smaller broadcast domains

Answer: D

QUESTION 44:

What is a VLAN?

- A.a routedinternetwork
- B.a single broadcast domain
- C.a group of switch ports that communicate through an RSM
- D.a group of switch ports that are member of the same multicast group

Answer: B

QUESTION 45:

Which statement about static VLANs is true?

- A.Devices use DHCP to request their VLAN.
- B.Attached devices are unaware of any VLANs.
- C.Devices are assigned to VLANs based on their MAC address

Answer: B

QUESTION 46:

What is a VLAN?

- A.a routedinternetwork
- B.a single broadcast domain
- C.a group of switch ports that communicate through an RSM
- D.a group of switch ports that are member of the same multicast group

Answer: B

QUESTION 47:

You are configuring a VLAN trunk on Fast Ethernet.

Which two trunking modes negotiate correctly when brining up a trunk link? (Choose two)

- A.Off
- B.Auto
- C.Negotiate
- D.Desirable
- E.Nonegotiate

Answer: B, D

QUESTION 48:

Which two events happen when deleting a VLAN from a switch? (Choose two)

- A.The configuration changes are immediately loaded to NVRAM.
- B.The ports associated to the deleted VLAN remain in that VLAN until it is reset.
- C.The ports associated to that VLAN remain inactive until it is assigned to another VLAN.
- D.Switches in different VTP domains are notified of the changes and their databases are modified.

Answer: A, C

QUESTION 49:

You have a large, flat network that is experiencing congestion. You want to create VLANs with smaller subnets on your Layer 2 switch to increase performance. Your only router is equipped with 10BaseT Ethernet ports.

How can you accomplish the assigned task?

- A.Use separate physical links from the router to the switch for each VLAN.
- B.Move each new subnet to a separate router interface and route all traffic.
- C.Enable ISL trunking on the router and pass all VLAN traffic on a single link.
- D.Enable 802.1Q trunking on the router to pass all VLAN traffic on a single link.

Answer: A

QUESTION 50:

Which two statements about VLANS and broadcast are true? (Choose two)

- A.Fewer network devices reduce broadcast traffic.
- B.Multicast packets are always broadcast in VLANS.
- C.BPDU frames are not propagated when routing switched VLANS.
- D.Broadcast are dropped at the router interface for each logical network.

Answer: A, D

QUESTION 51:

You have a Catalyst 5000 switch with a large network. Broadcasts are consuming too much bandwidth. You want to create VLANs and need inter VLAN communication.

Which hardware accomplishes this?

- A.MLS
- B.RSM
- C.MSFC
- D.VLANinterswitch

Answer: B

QUESTION 52:

You have a large flat network that is experiencing congestion. You want to create VLANs with smaller subnets Layer 2 switch to increase performance. Your only router is equipped with 10BaseT Ethernet ports.

How can you accomplish the assigned task?

- A. use separate physical links from the router to the switch for each VLAN
- B. move each new subnet to a separate router interface and route all traffic
- C. enable ISL trunking on the router and pass all VLAN traffic on a single link
- D. enable 802.1Q trunking on the router to pass all VLAN traffic on a single link

Answer: A

QUESTION 53:

How do VLANs solve the scalability problems found in large, flat networks? (Choose three.)

- A. by limiting CDP frames
- B. by limiting BPDU frames
- C. by providing routing functionality
- D. by limiting the flooding of multicast frames
- E. by limiting the flooding of broadcast frames

Answer: B, D, E

QUESTION 54:

What are two methods of stopping VLAN broadcasts from flooding and that do NOT need these broadcast frames? (Choose two)

- A. enabling VLAN authentication
- B. enabling VTP pruning on the switch
- C. removing VLANs with the clear trunk command
- D. removing VLANs with the clear VTP NVRAM command

Answer: BC

QUESTION 55:

Which three are disadvantages of NAT? (Choose three)

- A. It cannot be used with firewalls.
- B. It introduces switching path delays.
- C. It increases security vulnerabilities.
- D. It complicates packet troubleshooting.
- E. It breaks applications that use embedded addresses.

Answer: B, D, E

Incorrect Answers: A, it can be used with firewalls, C, it actually decreases security vulnerabilities.

QUESTION 56:

Which statement about configuring NAT for TCP load distribution is true?

- A.It is enabled by mapping multiple outside addresses to an inside address.
- B.It is enabled with the type rotary parameter on the ipnatpool command.
- C.It is configured with the overload parameter on the ipnatinside command.
- D.It requires an access list that permits an outside address to a group of inside local addresses.

Answer: B

QUESTION 57:

How does a Layer 2 switch handle multicast traffic, by default?

- A.It blocks multicast traffic on all ports.
- B.It delivers multicast traffic to all ports.
- C.It delivers multicast traffic only to ports that subscribe to it.
- D.It delivers multicast traffic only to clients that are a member of a multicast group.

Answer: B

QUESTION 58:

What is the EIGRP multicast flow timer?

- A.The timer after which EIGRP stops forwarding multicast data traffic.
- B.The timeout timer after which EIGRP retransmits,unicastingthe neighbor not in CR mode.
- C.The time interval between consecutive received EIGRP hello intervals.
- D.The time interval between consecutive transmitted EIGRP hello intervals.
- E.The timeout timer after which EIGRP retransmits,unicastingthe neighbor in CR mode.

Answer: B

QUESTION 59:

Which IP multicast addresses does OSPF use?

- A.224.0.0.1 and 224.0.0.2
- B.224.0.0.4 and 224.0.0.5
- C.224.0.0.5 and 224.0.0.6
- D.224.0.0.2 and 255.255.255.255
- E.255.255.255.255

Answer: C

QUESTION 60:

Which two Cisco products provide gigabit Ethernet and gigabitEthernetChannelto the backbone?

(Choose two)

- A.2950
- B.3550
- C.3700
- D.4000

Answer: A, B

http://www.cisco.com/en/US/products/hw/switches/ps628/products_white_paper09186a008009268A.shtml

QUESTION 61:

Which technology manages multicast traffic at Layer 2 by configuring Layer 2 interfaces dynamically to forward multicast traffic only to those interfaces that want to receive it?

- A.IGMP
- B.IGMP snooping
- C.PIM-DM
- D.DVMRP
- E.MOSPF

Answer: B

QUESTION 62:

Which parameter will be used to determine when to disconnect an idle established DDR call, when the line is needed to place a DDR call to a different destination?

- A.The time specified bydialer idle-timeout
- B.The time specified bydialer fast-idle
- C.The value configured bydialer load-threshold
- D.The presence of interesting traffic designated for a different destination will force an immediate disconnect

Answer: B

QUESTION 63:

Certkiller .com has unique dial requirements for each branch site that communicates with a central site router. Which two commands permit multiple physical interface on Central router to be shared by multiple remote sites while retaining their unique site requirements? (Choose two)

- A. dialer pool
- B. dialer-list
- C. dialer-group
- D. dialer hunt-group
- E. dialer pool-member

Answer: A, E

Note: Dialer profiles separate logical configurations from the physical interfaces that receive

or make calls. Because of this separation, interfaces such as ISDN, asynchronous modems, or synchronous serial connections can be shared by multiple dialer profile configurations. Dialer profiles allow logical and physical configurations to be bound together dynamically on a per call basis, allowing physical interfaces to take on different characteristics based on incoming or outgoing call requirements. They also can define encapsulation, access control lists, minimum or maximum calls, and toggle features on or off.

dialer pool pool-number: Specify the dialing pool to use for calls to this destination.

dialer pool-member pool-number: Assign the physical interface to a dialer pool.

QUESTION 64:

Which router command is used to reverse telnet to a modem locally connected to line 8?

- A. telnet 10.1.1.1 1008
- B. telnet 10.1.1.1 2008
- C. telnet 10.1.1.1 8
- D. telnet 8 10.1.1.1

Answer: B

QUESTION 65:

What is the purpose of the dialer-list command when configuring a router to initiate a dial-on-demand routing ISDN call?

- A. It defines call destination parameters.
- B. It defines what constitutes interesting traffic.
- C. It provides for optional call parameters.
- D. It assigns a dialer-group to an interface.

Answer: B

QUESTION 66:

Which type of IGMP message is sent when a network client wants to join a multicast group?

- A. host membership query
- B. host membership report
- C. host membership status
- D. host membership notification

Answer: B

QUESTION 67:

What are three new features of SDM 2.0? Select three.

- A. Cisco IOS Easy VPN Remote with Client Mode Release 2.0
- B. QoS policy configuration
- C. firewall (CBAC)
- D. router and network resource monitoring

E.Role-based Access Control
F.traffic flow analysis

Answer: B, D, E

QUESTION 68:

Which are responsibilities of IKE in the IPsec protocol? (Choose three)

- A. negotiating protocol parameters
- B. packet encryption
- C. exchanging public keys
- D. integrity checking using hashes
- E. authenticating both sides of a connection
- F. implementing tunnel mode

Answer: A, C, E

Note: IKE is a protocol used to automatically negotiate the security parameters, authenticate identified parameters, and secure and establish an agreement between IPsec routers. Multiple IKE policies can be defined between two IPsec peers; however, there must be at least one matching IKE policy between them to establish the IPsec tunnels.

QUESTION 69:

Which router command specifies RADIUS server that will authenticate dial up clients?

- A.aaa radius server
- B.radius-server host
- C.ip aaa radius host
- D.aaa authenticatoradius-server

Answer: D

QUESTION 70:

Which Quality of Service technology classifies traffic based on dynamically observed traffic flows?

- A.FIFO
- B.WFQ
- C.Custom Queuing
- D.Priority Queuing

Answer: B

QUESTION 71:

Which three statements are true about CHAP and PAP? (Choose three.)

- A.PAP sends passwords in clear text.

- B.PAP is vulnerable to playback (packet replay).
- C.Routers always try CHAP before they try PAP.
- D.PAP requires less processing and bandwidth than CHAP.
- E.CHAP can use TACACS+ and RADIUS security servers. PAP must use RADIUS servers only.
- F.CHAP uses a fixed value for each connection which is used based on the time it occurs on a particular connection.

Answer: A, B, D

QUESTION 72:

What are purpose of the ACL-sub command in the crypto isakmp client configuration group (group-namedefault) command ?

- A.enables split tunneling
- B.disables split tunneling
- C.indicates the protected range
- D.indicates the unproduced range

Answer: A, C

QUESTION 73:

What are two purposes of the ACL sub-command in the cryptoisakmpclient configuration group { group-name| default\} command? Choose two)

- A.enables split tunneling
- B.disables split tunneling
- C.indicates the protected range
- D.indicates the unprotected range

Answer: A, C

QUESTION 74:

Which two traffic queuing methods are enabled by default on Cisco routers? (Choose two)

- A.FIFO
- B.Priority
- C.Custom
- D.Weighted Fair

Answer: A, D

QUESTION 75:

With which two Cisco IOS Firewall security features is the authentication proxy compatible? (Choose two)

- A.Cisco router

- B.NAT
- C.PAT
- D.CBAC
- E.RADIUS
- F.TACACS+

Answer: B, D

QUESTION 76:

Which queuing method dynamically provides fair bandwidth allocation to all network traffic?

- A.FIFO
- B.WFQ
- C.Priority
- D.Custom

Answer: B

QUESTION 77:

Where are access profiles stored with the authentication proxy features of the Cisco IOS Firewall?

- A.PIX Firewall
- B.Cisco router
- C.Cisco VPN Concentrator
- D.Cisco Secure ACS authentication server

Answer: D

QUESTION 78:

Which three thresholds does CBAC on the Cisco IOS Firewall provide against DoS attacks? (Choose three)

- A.Member of half-open session based upon time.
- B.Total number of half-open TCP or UDP sessions.
- C.Number of fully open sessions based upon time.
- D.Number of half-open TCP-only sessions per host.
- E.Total number of fully open TCP or UDP sessions.
- F.Number of fully open TCP-only sessions per host.

Answer: A, B, D

QUESTION 79:

What does CBAC on the Cisco IOS Firewall do?

- A.Creates specific security policies for each user.
- B.Provides secure, per-application access control access network perimeters.

- C.Provides additional visibility at intranet, extranet, and Internet perimeters.
- D.Protects the network from internal attacks and threats.

Answer: B

QUESTION 80:

Which IOS queuing method ensures that certain protocols are transmitted before others?

- A.FIFO
- B.Priority
- C.Custom
- D.Weighted Fair

Answer: B

QUESTION 81:

Which queuing method dynamically provides fair bandwidth allocation to all network traffic?

- A.FIFO
- B.WFQ
- C.Priority
- D.Custom

Answer: B

QUESTION 82:

For what three conditions are the trafficpriorizationfeatures in Cisco IOS best suited? (Choose three)

- A.Low-speed data links that have no congestion.
- B.BurstyWAN links experiencing only temporary congestion.
- C.A connection that has multiple protocols sharing a single data path.
- D.A Frame Relay connection that experiences utilization from 10 to 40%.
- E.A DDR connection that is always connected and runs at 70 to 100% utilization most of the day.

Answer: B, C, E

QUESTION 83:

How many security levels are available on the Firewall Services module?

- A.1
- B.20
- C.50
- D.100
- E.1000

Answer: D

http://www.cisco.com/univercd/cc/td/doc/product/lan/cat6000/cfgnotes/78_14450.htm

QUESTION 84:

Which two compression algorithms does link compression support? (Choose two)

- A. Stac
- B. MNP5
- C. Huffman
- D. Predictor
- E. Van Jacobson

Answer: A, D

Note: Van Jacobsen Header compression Huffman Fax compressed and encoding MNP5 Modem Compression

QUESTION 85:

Which statement about TCP/IP header compression is true?

- A. ?
- B. ?
- C. It uses the stac compression algorithm.
- D. ?

Answer:

QUESTION 86:

The Unity protocol supports only ISAKMP policies that use ___ IKE negotiation. So the IPsec server being used with the Cisco Easy VPN Remote must be configured for this group?

- A. Group1
- B. Group2
- C. Group3
- D. Group7

Answer: B

QUESTION 87:

Which two features can SDM 2.0 configure? Select two.

- A. resource monitoring
- B. PIM
- C. QoS
- D. SRST
- E. MPLS VPNs

Answer: A, C

QUESTION 88:

Which three does VAM provide? Select three.

- A.privacy
- B.integrity
- C.accounting
- D.authenticity

Answer: A, B, D

QUESTION 89:

Which protocol uses UDP to exchange information between the client and server?

- A.TACACS+
- B.RADIUS
- C.AAA
- D.LCP

Answer: B

QUESTION 90:

Which three protocols can be used by the NAC solution to implement its functions? Choose three.

- A.IKE
- B.802.1x
- C.RSA
- D.EAP
- E.RADIUS
- F.WEP

Answer: B, D, E

QUESTION 91:

Which protocol does TACACS+ use to communicate between TACACS+ server and a TACACS+ client?

- A.UDP
- B.TCP
- C.IP
- D.LEAP

Answer: B

QUESTION 92:

What is the default action of authentication when AAA is enabled but authentication is not set?

- A.Allow a user to access all resources after login.
- B.Disallow a user from access to all resources after login.
- C.Record all access of resources and who long the user accessed each resources.
- D.Not to record any access of resources the users accessed after login.
- E.Allow any user to login without checking the authentication database.
- F.Disallow any user from logging in with or without a valid username and password

Answer: F

QUESTION 93:

Which services are common to AH and ESP?

- A.confidentiality, data integrity, and anti-replay service
- B.data origin authentication, confidentiality, and anti-replay service
- C.data integrity, data origin authentication, and anti-replay service
- D.confidentiality, data integrity, and data origin authentication

Answer: C

QUESTION 94:

Which QoS technique avoids the problems that occur when tail drop is used as the congestion avoidance mechanism on the router?

- A.RSVP
- B.WRED
- C.CAR
- D.CBWFQ

Answer: B

QUESTION 95:

Which statement is true about the STP path cost on a particular port?

- A. It is known only to the local switch where the port resides.
- B. It can be modified to help determine root bridge selection
- C. Modifying it can cause TCN BPDU to be send to the root bridge
- D. When increased, it can provide higher bandwidth to a connecting port

Answer: A

Note: BPDUs and How to Compare Them Bridge Protocol Data Units (BPDUs) can be strictly classified using the fields they carry. Among these fields are the root bridge ID, path cost to the root, and sender bridge ID. A BPDU is considered better than another BPDU for the following reasons:..

When one BPDU carries a better root bridge ID than another (the lower the value, the better)..

When the root bridge ID values are equal, then the BPDU with the lowest path cost to the root is better.. When the root bridge

ID values are equal and the costs to the root are the same, then the BPDU with the better sender bridge ID is better (the lower the value, the better). There are other variables that then can act as a tie-breaker, however, the better a BPDU, the better the access to the best root bridge. A bridge that receives a BPDU on a port better than the one it would send out, puts this port in blocking mode unless it is its root port. This means that on the segment connected to this port, there is another bridge that is a designated bridge. A bridge stores the value of the BPDU on a port sent by the current designated bridge.

QUESTION 96:

DRAG DROP

As an engineer at Certkiller.com you are required to match the Spanning Tree Protocol states to the matching definitions.

Definitions	States, place here
Sends or receives user data.	Place here
processes BPDUs, does not forward traffic.	Place here
administrative down	Place here
builds bridging table	Place here
receives BDPUs only	Place here
States, select from these	
Listening	blocking
forwarding	learning
disabled	

Answer:

As an engineer at Certkiller.com you are required to match the Spanning Tree Protocol states to the matching definitions.

Definitions	States, place here
Sends or receives user data.	forwarding
processes BPDUs, does not forward traffic.	Listening
administrative down	disabled
builds bridging table	learning
receives BDPUs only	blocking

QUESTION 97:

IEEE 802.1w RSTP defines which port states?

- A. Listening, Learning, Forwarding, Blocking, Disabled.
- B. Learning, Forwarding, Discarding.
- C. Learning, Active, Block.
- D. Listening, Forwarding, Active, Blocking.

Answer: B

QUESTION 98:

Which of the following technologies uses a Root Link BPDU query?

- A.BackboneFast
- B.PortFast
- C.UplinkFast
- D.STP standard

Answer: A

BackboneFast is initiated when a root port or blocked port on a switch receives inferior BPDUs from its designated bridge. An inferior BPDU identifies one switch as both the root bridge and the designated bridge. When a switch receives an inferior BPDU, it indicates that a link to which the switch is not directly connected (an indirect link) has failed (that is, the designated bridge has lost its connection to the root bridge). Under normal spanning-tree rules, the switch ignores inferior BPDUs for the configured maximum aging time, as specified by the aging time variable of the `spanning-tree max-age` command.

The switch tries to determine if it has an alternate path to the root bridge. If the inferior BPDU arrives on a blocked port, the root port and other blocked ports on the switch become alternate paths to the root bridge. (Self-looped ports are not considered alternate paths to the root bridge.) If the inferior BPDU arrives on the root port, all blocked ports become alternate paths to the root bridge. If the inferior BPDU arrives on the root port and there are no blocked ports, the switch assumes that it has lost connectivity to the root bridge, causes the maximum aging time on the root to expire, and becomes the root switch according to normal spanning-tree rules.

If the switch has alternate paths to the root bridge, it uses these alternate paths to transmit a new kind of PDU called the Root Link Query PDU. The switch sends the Root Link Query PDU out all alternate paths to the root bridge. If the switch determines that it still has an alternate path to the root, it causes the maximum aging time on the ports on which it received the inferior BPDU to expire. If all the alternate paths to the root bridge indicate that the switch has lost connectivity to the root bridge, the switch causes the maximum aging times on the ports on which it received an inferior BPDU to expire. If one or more alternate paths can still connect to the root bridge, the switch makes all ports on which it received an inferior BPDU its designated ports and moves them out of the blocking state (if they were in blocking state), through the listening and learning states, and into the forwarding state.

QUESTION 99:

At which OSI layer does spanning tree protocol operate ?

- A.Layer 1
- B.Layer 2
- C.Layer 3
- D.Layer 4

Answer: B

QUESTION 100:

At which OSI layer does Spanning Tree Protocol operate?

- A.Layer 1
- B.Layer 2
- C.Layer 3
- D.Layer 4

Answer: B

QUESTION 101:

Which command displays the number of members in a bundle and the bundle to which a link belongs?

- A.show multilink
- B.show ppp status
- C.showmlpppstatus
- D.show ppp multilink
- E.show ppp negotiation

Answer: D

QUESTION 102:

Which two statements about Multilink PPP are true? (Choose two)

- A.MLP is most effective with ISDN.
- B.MLP splits packets and sends fragments over multiple links.
- C.Timing is critical because MLP does not support sequencing.
- D.MLP uses a round-robin algorithm to sendunfragmentedindividual packets across multiple lines.

Answer: A, B

QUESTION 103:

What happens in the aggressive mode of the CBAC on the Cisco IOS Firewall?

- A.CBAC deletes all half-open sessions.
- B.CBAC re-initiates half-open sessions.
- C.CBAC completed all half-open sessions, making them fully open sessions.
- D.CBAC deletes half-open sessions as required to accommodate new connection requests.

Answer: D

QUESTION 104:

Bridging LANs helps to alleviate collisions in a CSMA/CD environment by reducing the size of the collision domain.

However, it fails to address which problem?

- A.Excessive CRC errors
- B.Media-type mismatches
- C.Flooding of BPDU frames
- D.Excessive broadcast frames

Answer:

QUESTION 105:

Which Catalyst product is designed to replace hubs in the wiring closet?

- A.1950
- B.2950
- C.3550
- D.5000

Answer: C

The Catalyst 3550 Series can serve as both a powerful access layer switch for medium enterprise wiring closets, as a backbone switch for mid-sized networks, and also for the edge of metro access networks.

<http://www.cisco.com/en/US/products/hw/switches/ps646/ps3814/index.html>

QUESTION 106:

Port security on a 3550 switch allows a network administrator to lock a port based on_____.

- A.User name
- B.IP address
- C.MAC address
- D.VLAN membership

Answer: C

http://www.cisco.com/en/US/products/hw/switches/ps646/products_system_message_guide_chapter09186a0080115b72

QUESTION 107:

In which Catalyst model does theFlexWANmodule work? (Select all that apply.)

- A.2950
- B.3550
- C.4000
- D.6500
- E.7600

Answer: D, E

Note: TheFlexWANmodule for the Cisco(r) 7600 Series Router and CiscoCatalyst(r) 6500 Series Switch enables

high-performance, intelligentLAN, WAN, and metropolitan-area network (MAN) service scalability forboth enterprises and service providers. TheFlexWANmodule supports avariety of clear-channel andChannelized

WAN interfaces, including T1/E1, T3/E3, High-Speed Serial Interface (HSSI), T3/E3 ATM, OC-3ATM, and OC-3 packet over SONET (POS) with the ability to directly interface with high-speed SONET equipment for metropolitan-area networking

QUESTION 108:

How many PVDM slots are available on the Cisco 2800 Series Integrated Services Routers?

- A. one to two
- B. two to three
- C. three to four
- D. four to five

Answer: B

QUESTION 109:

Which command configures a default gateway on a Catalyst 3500XL switch?

- A. Switch(config)# ip route ip address
- B. Switch(enable) set ip route ip address
- C. Switch(enable) ip route-default ip address
- D. Switch(config)# ip default-gateway ip address
- E. Switch(enable) set ip default-gateway ip address

Answer: D

QUESTION 110:

The Catalyst 2950 allows for future expansion through its _____.

- A. Modularization
- B. IOS capabilities
- C. Internal AIM slot
- D. Gigabit Ethernet ports

Answer: D

QUESTION 111:

The Catalyst 4500 family offers which layer(s) of nonblocking switching?

- A. Layer 2
- B. Layer 2/3
- C. Layer 2/3/4
- D. Layer 2/3/4/5

Answer: B

http://www.cisco.com/en/US/products/hw/switches/ps4324/prod_bulletin09186a00801304df.html

QUESTION 112:

How many Fast Ethernet ports are available on the Catalyst 4000?

- A. 96
- B. 124
- C. 132
- D. 224
- E. 240

Answer: E

<http://www.cisco.com/en/US/products/hw/switches/ps663/ps668/index.html>

QUESTION 113:

How many models does the Catalyst 6500 have?

- A. 2
- B. 3
- C. 4
- D. 6
- E. 7

Answer: C

6503, 6506, 6509, 6513

QUESTION 114:

Certkiller .com is looking for a new switch that will support their 100 users and IP telephony. Which product should you recommend?

- A. 2950
- B. 3550
- C. 4003
- D. 6500

Answer: D

QUESTION 115:

Which Catalyst Switch has modules tailored for VOIP?

- A. 2950
- B. 3550
- C. 4000
- D. 6500

Answer: D

Note: 2950 and 3550 don't have modules. 4000 don't support VoIP modules. 4500 and 6500 is tailored for VoIP.

QUESTION 116:

Console port on the 6513 allows which type of management ?

- A.physical
- B.logical
- C.inbound
- D.outbound

Answer: D

QUESTION 117:

Which two Catalyst 6500 components are hot-swappable? (Choose two)

- A.RAM
- B.GBICs
- C.Switch fabric
- D.PFC daughter card

Answer: B, D

QUESTION 118:

Which two are VIP4 improvements? (Choose two)

- A.RRMP
- B.error code correction version 4
- C.the ability to run any routing protocol directly
- D.highercapacity memory modules for rich IP Services.

Answer: B, D

QUESTION 119:

Which additional ports does the single port OC-48c/STM-16 POS card have?

- A.2 Gigabit Ethernet ports
- B.4 Gigabit Ethernet ports
- C.2 OC-12c/STM-4 POS ports
- D.4 OC-12c/STM-4 POS ports

Answer: B

QUESTION 120:

The console port on the Cisco 6513 switch allows which type of management?

- A.Physical management of the switch.
- B.Logical management of the switch.
- C.In-band management of the switch.

D.Out-of-band management of the switch.

Answer: A

QUESTION 121:

To utilize the FWSM with two components are required on the Catalyst 6500 platform?(Choose two)

- A.IOS
- B.CatOS
- C.Su2
- D.Su2 with MSFC

Answer: A, D

QUESTION 122:

What trends influence the market for more powerful WANs?

- A.Speed and distance
- B.Prioritization and speed
- C.Speed and integration of voice and data
- D.Integration of voice and video, and the need for prioritization.

Answer: D

QUESTION 123:

A Company is installing more than 300workstatinsthat needsimultaneousaccessto the Internet. The company has a single class C block of IPaddressforthe new workstations. How can the company ensure Internet access forallofthe workstation?

Answer:

QUESTION 124:

Which three benefits do both dial-up and broadband solutions provide? (Choose three)

- A.Flexibility
- B.Affordable cost
- C.Easy setup and administration
- D.Easy access from retail shopping areas

Answer: A, B, C

QUESTION 125:

What are the optional components of the 36 port HDSM?

- A.Power Daughter Card and one GE-TX port.

- B.Power Daughter Card and two GE-TX ports.
- C.Dual Power Daughter Card and one GE-TX port.
- D.Dual Power Daughter Card and two GE-TX ports.

Answer: B

Note:NMD-36-ESW-One 36-port 10/100EtherSwitchHigh Density Service ModuleNMD-36-ESW-PWR*-One 36-port 10/100EtherSwitchHDSM with Inline PowerNMD-36-ESW-2GIG-One 36-port 10/100EtherSwitch HDSM with 2 GE (1000BaseT)NMD-36-ESW-PWR-2G*-One 36-port 10/100EtherSwitchHDSM +Inline Power and 2GE

QUESTION 126:

What are the market drivers for WAN products?

- A.speed, cost, user demands
- B.cost, user demands, availability
- C.user demands, scalability, availability
- D.competition, user demands, new and improved products and services

Answer: D

QUESTION 127:

What are two characteristics of theHWICs? Select two.

- A.support inline power including 802.3af
- B.provides up to 8 Mbps of performance
- C.is not backward compatible with theWICs
- D.supports OIR (Online Insertion and Removal)
- E.can be single or double wide

Answer: A, E

QUESTION 128:

The telecommunications sector is now highly competitive. New carriers are _____.

- A.usingcable to compete with DSL.
- B.creatingapplications and reporting capabilities to compete with incumbent carriers.
- C.usingwireless to provide speed and creating new applications they believe will satisfy user demand.
- D.creatingenhanced services to compete with incumbents, and new carriers are creating infrastructure so they do not need to outsource to existing operators.

Answer: D

QUESTION 129:

Which tree are reasons that support the use of telecommuting? (Choose tree)

- A.To increase productivity.

- B.To reduce the cost of wan connectivity.
- C.To retain and recruit talented employees.
- D.To meet government policies to reduce traffic and increase air quality.

Answer: A, C, D

QUESTION 130:

What are two closely related standards specifically designed for data transmission over fiber optic networks? (Choose two.)

- A.FDDI
- B.SONET
- C.SDH
- D.DSL
- E.ATM

Answer: B, C

QUESTION 131:

Cisco DPT rings start and scale to what speed?

- A.start at OC6 and scale to OC48
- B.start at OC1 and scale to OC768
- C.start at OC12 and scale to OC192
- D.start at OC12 and scale to OC128

Answer: C

QUESTION 132:

What triggers the authentication proxy on the Cisco IOS Firewall?

- A.User initiates inbound interface.
- B.User initiated login through the firewall.
- C.User initiates an FTP session through the firewall.
- D.User initiates an HTTP session through the firewall.

Answer: D

QUESTION 133:

What is the default for the length of time, in seconds, a DNS name lookup session will still be managed after no activity is registered on the Cisco IOS Firewall?

- A.5
- B.30
- C.60
- D.3,600

Answer: A

QUESTION 134:

When used with the IOS Firewall, what does CBAC use for inspection rules to configure on per-application protocol basis?

- A. Alerts and audit trails
- B. ODBC filtering
- C. Tunnel, transport modes, or both
- D. Stateful failover

Answer: A

QUESTION 135:

CMS enables fast deployment of networks with the use of the _____ tool.

- A. Software Upgrade
- A. Fault Management
- B. Access Control List
- C. Configuration Cloning

Answer: D

http://www.cisco.com/warp/public/cc/pd/si/casi/ca3550/prodlit/cclms_ds.htm

QUESTION 136:

Which method is used for voice media encryption?

- A. SRTP
- B. SRST
- C. cRTP
- D. SSL
- E. SHA-HMAC

Answer: A

QUESTION 137:

What is the purpose of a CSU/DSU in a leased T1 WAN configuration?

- A. It provides encryption and compression for security of transmitted data.
- B. It multiplexes individual 64K channels into a single circuit.
- C. It channelizes the leased T1 line into multiple 64K circuits.
- D. It provides signal timing for communications and interfaces to the digital transmission.
- E. It converts the analog T1 signals into digital signaled for the router.

Answer: B

QUESTION 138:

Which command verifies Frame Relay traffic-shaping parameters?

- A.show frame-relaypvc
- B.show frame-relay status
- C.show frame-relay interface
- D.show frame-relay map-class

Answer: A

QUESTION 139:

What are two features of the CiscoEtherSwitch4- or 9-Port HWIC? Select two.

- A.low-density Layer 3 switching
- B.802.1x authentication
- C.802.1Q up to 32 VLANs
- D.802.afPoE
- E.CGMP

Answer: B, D

QUESTION 140:

A major insurancecompanyhas asked you to help them set up someremote employees who will be working from home. All the employeeestargeted for this transition are using cable modems or DSL CPE whichhands off a 10baseT Ethernet connection into the home.In interviewing the client you discover that they need a printer andPC at each home. No encryption, no quality of service, and no upgrades are planned for several years. Which Cisco product would yourecommend to keep the customer cost as low as possible?

- A. Cisco 831
- B. Cisco 837
- C. CiscoSOHO91
- D. Cisco SOHO 97

Answer: C

Note: The Cisco SOHO 91 Ethernet Broadband Router, part of the Cisco SOHO 90 series routers, has an Ethernet WAN port for use with anexternal DSL or cable modem and a four-port 10/100 Ethernet LANswitch for connecting multiple PCs or network devices in a smalloffice network.

QUESTION 141:

What is the purpose of theAutodetectfunction of the CRWS tools?

- A.to detect the encapsulation of the line whether it isPPPoE,PPPoA, or bridged

- B.to detect if the connection is over cable orDSLAndto set up the router appropriately
- C.to detect if there is a connection, if there a connection to acquire the DHCP information from the carrier
- D.todetect if there is a connection and there is a connection to acquire the DHCP information from the carrier and the import that information to the DHCP server for the inside network.

Answer: A

QUESTION 142:

Which statements are true about the data-link connection identifier (DLCI)?
(Choose two.)

- A.DLCI numbers need to be identical on all DTE devices.
- B.DLCI numbers have local significance.
- C.DLCI is assigned by NetworkAdministrator.
- D.DLCI is assigned by the Frame Relay service provider.

Answer: B, D

QUESTION 143:

What is the primary difference betweenPPPoAand eitherPPPoEor RFC 1483 Bridge encapsulation methods?

- A.PPPoArequires host-based client software to provide connectivity and authentication.
- B.PPPoAdoes not support session authentication with the aggregation router.
- C.PPPoAis routed end-to-end from the user's PC (or local router) over ATM to the aggregation router.
- D.PPPoAprovides simple bridged connections for an unlimited amount of hosts.

Answer: C

QUESTION 144:

Drag and drop the ISDN term in the options column to the related term in the target column.

U interface	Four wires	Place here
TE1	Two wires	Place here
R interface	Non-ISDN device	Place here
S/T interface	TE2 to TA	Place here
TE2	Native ISDN device	Place here

Answer:

Four wires	S/T interface
Two wires	U interface
Non-ISDN device	TE2
TE2 to TA	R interface
Native ISDN device	TE1

QUESTION 145:

Which feature will cache routes learned by dynamic routing protocols, enabling their use over DDR connections?

- A.route redistribution
- B.dynamic static routes
- C.snapshot routing
- D.DDR route maps
- E.Passive interfaces

Answer: C

QUESTION 146:

If not valid authentication entry exists in the authentication proxy, how does the proxy respond to the HTTP connection request?

- A.Prompting the user for a username.
- B.Prompting the user for a password.
- C.Prompting the user for a username and password.
- D.Sending an alert to the Cisco Secure ACS server.

Answer: C

QUESTION 147:

What does the authentication proxy feature of the Cisco IOS Firewall allow network administrators to do?

- A.Apply specific security policies on a per-user basis.
- B.Use a general policy applied across multiple users.
- C.Use a single security policy that is applied to an entire user group or subnet.
- D.Keep user profiles active even where there is no active traffic from the authenticated users.

Answer: A

QUESTION 148:

What does the Cisco IOS Firewall authentication proxy allow network administrators to do?

- A.Allow users to log into the network.
- B.Apply a general policy across multiple users.
- C.Apply specific security policies on a per-user basis.
- D.Apply a single security policy to an entire user group.

Answer: C

QUESTION 149:

You work as a network consultant at Certkiller . You have been asked by a client to help company employees connect with an ISP so that they can gain access to the Internet. The employees will use VPN software on their PCs to access the corporate network through the Internet. No cable or DSL is available so you must use ISDN.

Thetelcodoes NOT supply NT1s, there will be two PCs connecting and a printer at eachlocation,and each location will have an analog fax machine.

Which Cisco 800 series router should you recommend?

- A.Cisco 801
- B.Cisco 802
- C.Cisco 803
- D.Cisco 804

Answer: D

802 meets the requirements because of the ISDN Uhoweverit does not have enough ports. The 803 will not work because it is ISDN S/T and requires a NT1.

http://www.cisco.com/en/US/products/hw/modules/ps3129/products_tech_note09186a00800ab514.shtml

QUESTION 150:

What does theautoselectfeature of a Cisco access server allow?

- A.The selection of IP packets forrouting .
- B.A configured process to start automatically.
- C.Serial interfaces to sense incoming modem calls.
- D.Users topreselectwhich protocol they want to use.

Answer: B

Theautoselectppp command configures the Cisco IOS software to allow a PPP session to start up automatically on these selected lines

http://www.cisco.com/en/US/products/sw/iosswrel/ps1826/products_feature_guide09186a0080080efc.html

Incorrect

C, D don't seem possible

QUESTION 151:

Which two features or benefits do the Cisco 800 series routers offer? (Choose two)

- A.Support for voice and fax ports.
- B.The high speed of ISDN for access.

- C.Support for a wide range of routing protocols.
- D.Support for multiple Frame Relay simultaneous connections.

Answer: A, B

Cisco Partner Slide Presentation

QUESTION 152:

What is the default IP address for the CRWS tool as accessed from the inside port of the Cisco SOHO or Cisco 800 series routers?

- A.10.0.0.1
- B.10.10.0.1
- C.10.10.10.1
- D.10.10.10.10

Answer: C

http://www.cisco.com/en/US/products/hw/routers/ps380/products_quick_start09186a00800ea6d5.html

QUESTION 153:

The Cisco uBR925 _____. (Choose two)

- A.is a high-speed cable modem
- B.is the final hop for DOCSIS carrier name resolution
- C.provides various services depending upon the IOS version installed.
- D.attached to cable networks using a special RFI-2 reverse BNC connector.

Answer: A, C

QUESTION 154:

You work as a network consultant at Certkiller. You have been asked by a client to help company employees connect with an ISP so that they can gain access to the Internet. The employees will use VPN software on their PCs to access the corporate network through the Internet. No cable, DSL, or ISDN is available since these employees work in very remote locations. The company still wants continuous access and are willing to pay for an analog phone line for each employee.

Which Cisco 800 series router should you recommend?

- A.Cisco 803
- B.Cisco 804
- C.Cisco 805
- D.Cisco 806

Answer: C

The 805 is the only one you can connect a modem to.

Cisco Partner Slide Presentation

QUESTION 155:

The Cisco 800 series router is positioned for _____. (Select three)

- A. 6 to 9 users
- B. users who want a combined router/hub solution
- C. users who may need analog ports for phone or fax
- D. users who need IP telephony services such as SRST

Answer: A, B, C

QUESTION 156:

As a contractor, you have been asked by a local telco to assist in the install of CPE for their ADSL network. They are using Cisco DSLAMs in their core network and want to use Cisco CPE for their customers. They inform you that they want you to select from several routers depending on customer needs as they have several levels of service. At your first customer location, the customer informs you that they want to use the router to make a direct, continuous, encrypted connection to their corporate headquarters with no split tunneling. Which Cisco ADSL router should you install?

- A. Cisco 831
- B. Cisco 837
- C. Cisco SOHO91
- D. Cisco SOHO 97

Answer: B

Note: The Cisco 837 and SOHO 97 routers are asymmetric digital subscriber line (ADSL)-over-plain old telephone service (POTS) routing devices. They have an integrated 4-port Ethernet switch for the LAN and an ADSL physical interface for the WAN, allowing the routers to connect a corporate telecommuter or small office to corporate LANs and the Internet. The Cisco 837 router is designed with both hardware-based and software-based encryption, while the SOHO 97 router supports only software-based encryption. The Cisco 837 routers support the addition of Flash memory or DRAM, either as a factory upgrade or a field-installed option. SOHO 97 routers have a fixed memory configuration.

QUESTION 157:

You work as a network consultant at Certkiller .com. You have been asked by a client to help company employees connect with an ISP so that they can gain access to the Internet. The employees will use VPN software on their PCs to access corporate network through the Internet. No cable or DSL is available so you must use ISDN.

The telco does NOT supply NT1s, there will be two PCs connecting and a printer at each location, and each location will have an analog fax machine.

Which Cisco 800 series router should you recommend?

- A. Cisco 801
- B. Cisco 802
- C. Cisco 803
- D. Cisco 804

Answer: D

QUESTION 158:

What does the Cisco 2691 support?

- A.1 network module, 3 WIC slots, and 1 AIM slot
- B.2 network modules, 3 WIC slots, and 1 AIM slot
- C.1 network module, 2 WIC slots, and 2 AIM slots
- D.1 network module, 3 WIC slots, and 2 AIM slots

Answer: D

QUESTION 159:

You have been asked by Certkiller .com to put in a router in a branch location. The router must have an Ethernet connection to a local LAN switch for the office and two T1s installed. The first T1 is connected to the corporate headquarters and the second T1 delivers access to another downstream branch to save transport costs with the telephone company.

What is the lowest cost Cisco router solution that will support this application?

- A.Cisco 805
- B.Cisco 1710
- C.Cisco 1721
- D.Cisco 1751

Answer: C

QUESTION 160:

Which two routers support the use of EtherSwitch modules and provide power to IP phones with the use of an external power supply? (Choose two)

- A.Cisco 2650
- B.Cisco 2691
- C.Cisco 3725
- D.Cisco 3745

Answer: A, B

Cisco Partner Slide Presentation

QUESTION 161:

Which two trunking methods are supported by the Cisco 2600 series? (Choose two)

- A.ISL
- B.LANE
- C.802.1q
- D.802.10

Answer: A, C

QUESTION 162:

What does the Cisco 3725 have?

- A. 2 network module slots, 3 VWIC slots, and 2 AIM slots
- B. 1 network module slot, 3 VWIC slots, and 2 AIM slots
- C. 3 network module slots, 2 VWIC slots, and 2 AIM slots
- D. 2 network module slots, 3 VWIC slots, and 3 AIM slots

Answer: A

Note: (Cisco Product Guide 2004)

QUESTION 163:

You have been asked by Certkiller .com to size a router for a small corporation. The corporation has five branch offices which will connect at T1 speeds. They will connect to the Internet on the same router with a broadband Ethernet connection. They require three 100baseT interfaces for the headquarters location. Which Cisco router meets these requirements at the lowest price?

- A. 2650
- B. 2691
- C. 3725
- D. 3745

Answer: B

QUESTION 164:

The 2600 series router supports VOIP and VoFR on ____.

- A. T1 only
- B. E1 and H1
- C. T1 and E1
- D. D1 and T1

Answer: C

QUESTION 165:

What is the maximum number of T1/E1 trunks that Cisco 3800 Series Integrated Services Routers can support?

- A. 6
- B. 12
- C. 24
- D. 48
- E. 64

Answer: C

QUESTION 166:

How many onboard PVDM DSP slots are available on the Cisco 1841 Integrated Services Router?

- A.none
- B.one
- C.two
- D.three
- E.four

Answer: A

QUESTION 167:

Which type of trunking does the 1721 router support?

- A.802.10
- B.ISL only
- C.802.1q only
- D.ISL and 802.1q

Answer: C

http://www.cisco.com/en/US/products/hw/routers/ps221/products_data_sheet09186a00800920ec.html

QUESTION 168:

Which three can the 7200 support? (Choose three)

- A.2 AC power supplies
- B.1 AC power supply only
- C.1 DC power supply only
- D.1 AC and 1 DC power supply

Answer: A, B, C

AC and DC cannot be mixed

QUESTION 169:

How many packets per second does the Cisco 7200 with NPE-400 support?

- A.375,000pps
- B.400,000pps
- C.500,000pps
- D.750,000pps

Answer: B

The NPE-### corresponds to theppsrate

QUESTION 170:

Which routing protocol helps the 7200 achieve high reliability?

- A.ISIS
- B.HSRP
- C.OSPF
- D.BGP4

Answer: B

Note: Hot Standby Router Protocol (HSRP)-Provides fast cut-over to a backup router in the event of a system or link failure

QUESTION 171:

Which feature of the 7200 supports switching of DS-0 timeslots ?

- A.MIX
- B.MSP
- C.MXP
- D.MICX

Answer: A

<http://newsroom.cisco.com/dlls/fspnisapid5bd.html>

QUESTION 172:

You have just been given a large transport network to configure. No interface on the network is below DS-3. There are four OC-3 POS interfaces, two OC-12 POS interfaces, two OC-3 ATM, two DS-3s and one GigE required at each router location.

Which router can support this one chassis and get 10 routers in a 40 RU rack?

- A.Cisco 7200
- B.Cisco 7300
- C.Cisco 7400
- D.Cisco 7500

Answer: B

Cisco Partner Slide Presentation

QUESTION 173:

What are two features of the Cisco 7300 ?(Choose two)

- A.is 5 RU high --1 or 4 RU
- B.has side-to-side airflow -->Front-back airflow
- C.has optional redundant power
- D.has an optional route processor

Answer: C, D

QUESTION 174:

The Cisco 7400 uses the same processor as which 7200 engine?

- A.NSE 1
- B.NSE 3
- C.NPE 225
- D.NPE 300
- E.NPE 400

Answer: A

Cisco Partner Slide Presentation

QUESTION 175:

What are the three chassis that the Cisco 7600 comes in? (Choose three)

- A.7603
- B.7606
- C.7609
- D.7613

Answer: A, B, C

QUESTION 176:

Network Services provide hardware-based data compression and encryption in the Cisco 7500 series and is done in the _____.

- A.VIM
- B.SSP
- C.Service adapters
- D.Route switch processor

Answer: C

QUESTION 177:

Which two protocols does the Cisco 7600FlexWANmodule support? Select two.

- A.HDLC
- B.SDLC
- C.LAP-E
- D.Frame Relay

Answer: A, D

QUESTION 178:

Using the Cisco 7600 services, converged data, voice, and videotraffic can be transported _ end-to-end across an interconnected LAN, WAN, and MAN environment?

- A.easily
- B.virtually
- C.remotely
- D.precisely
- E.seamlessly

Answer: A

QUESTION 179:

Which two routing protocols does the FWSM support? (Choose two)

- A.ISIS
- B.BGP
- C.Static
- D.OSPF
- E.EIGRP

Answer: C, D

Documentation says RIP and OSPF for one mode. Static Routes are only for transparent mode

QUESTION 180:

Usually, redundancy in the core is achieved with _____.

- A.PFC
- B.CDP
- C.VRRM
- D.HSRP

Answer: D

QUESTION 181:

DRAG DROP

As a network technician at Certkiller.com you are required to match the six HSRP states in which an HSRP-enabled router can exist to their corresponding definitions.

HSRP states, place here	
Participates in the election for the active or standby router.	Place here
State from which the router begins the HSRP process.	Place here
A candidate to become the next active router.	Place here
The router is still waiting to hear from the active router.	Place here
The router is currently forwarding packets.	Place here
Listens for hello messages from the active and standby routers.	Place here

HSRP states, select from these

Initial	Learn	Listen
Speak	Standby	Active

Answer:

As a network technician at Certkiller.com you are required to match the six HSRP states in which an HSRP-enabled router can exist to their corresponding definitions.

HSRP states, place here	
Participates in the election for the active or standby router.	Speak
State from which the router begins the HSRP process.	Initial
A candidate to become the next active router.	Standby
The router is still waiting to hear from the active router.	Learn
The router is currently forwarding packets.	Active
Listens for hello messages from the active and standby routers.	Listen

HSRP states, select from these

Initial	Learn	Listen
Speak	Standby	Active

QUESTION 182:

To improve the performance of the Cisco Integrated Services Router platforms, the NME, HWICs, AIM, and DSP should be connected directly to which component?

- A. SCSI bus
- B. custom ASIC
- C. PCI bus
- D. crossbar bus
- E. CPU

Answer: B

QUESTION 183:

Which three features are provided by the new ASIC in the Cisco Integrated Services Router platform? Select three.

- A. provides a nonblocking high-speed bus to each interface and slot on the router
- B. processes any specific services
- C. allows DSP resources to be shared between all interfaces

- D.optimizes packet flow to and from CPU to improve efficiency
- E.accelerates QoS and ACL processing
- F.provides time of day and calendar used for validating certificates from a certificate authority

Answer: A, C, D

QUESTION 184:

In which HSRP states do routers send hello message? (Select three.)

- A.Initial
- B.Learn
- C.Listen
- D.Speak
- E.Standby
- F.Active

Answer: D, E, F

QUESTION 185:

Which protocol is an extension to ICMP that provides a mechanism for routers to advertise useful default routes?

- A.IRDP
- B.HSRP
- C.VRRP
- D.Proxy ARP
- E.GLBP

Answer: A

QUESTION 186:

What protocol specified by RFC 1256 will allow an enabled IP host find a new router when a router becomes unavailable?

- A.IRDP
- B.SNMP
- C.HSRP
- D.VRRP

Answer: A

QUESTION 187:

In which three HSRP states do routers send hello messages? (Choose three)

- A.Standby
- B.Learn
- C.Listen

D.Speak
E.Active

Answer: A, D, E

QUESTION 188:

What is NOT a BGP attribute?

A.Origin
B.Weight
C.Local_pref
D.Community
E.Cluster_list

Answer: E

Reference:http://www.cisco.com/univercd/cc/td/doc/cisintwk/ito_doc/bgp.htm

QUESTION 189:

Which BGP attribute are "well known"?

A.Next-hop
B.Aggregator
C.AS-path
D.Atomic-aggregate
E.MED

Answer: A, C, D

Next-Hop WELL-KNOWN, MANDATORY

AS-Path WELL-KNOWN, MANDATORY

Atomic-AggregateWELL-KNOWN, DISCRETIONARY

QUESTION 190:

BGP synchronization means:

A.A BGP router can only advertise aBGP-learned route if the route is in the BGP table with a metric of 0.
B.A BGP router can only advertise aBGP-learned route if the route is in the routing table as an IGP route.
C.A BGP router can only advertise aBGP-learned route if the route is in the routing table of all itsBGP neighbors.
D.A BGP router can only advertise aBGP-learned route if the route is in the BGP table but not in the routing table.
E.A BGP router can only advertise aBGP-learned route if the route is in the routing table as an IGP route.

Answer: E

QUESTION 191:

A company has 2 border routers running BGP to 2 different ISP's. They want to control which path inbound traffic takes without the use of communities.

What is the most important consideration?

- A. Metric
- B. MED
- C. AS-path prepending
- D. Weight
- E. Local preference

Answer: C

QUESTION 192:

Which events cause the EIGRP neighbor relationship to be restarted?

- A. Issuing the clear ip route command.
- B. Receiving an update packet with Init flag set from a known, already established neighbor relationship.
- C. Receiving an update packet from an unknown neighbor.
- D. Clearing the IP cache.
- E. Clearing the IP EIGRP neighbor relationship.

Answer: B, E

QUESTION 193:

What type of EIGRP packets carry the Init flag embedded?

- A. Hello
- B. Update
- C. Query
- D. Reply
- E. Ack

Answer: B

QUESTION 194:

Certkiller requires a device that can connect 26 users in one building and can connect to their main campus via EIGRP.

Which device supports this capability?

- A. 4000 with SUP 1
- B. 6500 with SUP 1a
- C. 2950 with SI software
- D. 3550 with EMI software

Answer: D

A, B seem to be too large of switches, C only goes up to 24 ports in Standard Image

QUESTION 195:

Which feature of the EZ VPN Remote makes it desirable to have Proxy DNS server support for the PCs attached to the VPN?

- A.Client mode with connect auto.
- B.Client mode with connect manual.
- C.Network Extension mode with connect auto.
- D.Network Extension mode with connect manual.

Answer: B

Cisco Partner Slide Presentation

QUESTION 196:

Which two statements are true aboutVPNs? (Choose two)

- A.Messages sent overVPNsrequire a 56-bit encryption key.
- B.VPNsuse a certification authority (CA) to digitally sign each transmitted message.
- C.VPNsuse public and private-key technology to establish a secure tunnel for each client connection.
- D.Both clients needing a secure connection and network devices providing the service must be VPN enabled.

Answer: C, D

QUESTION 197:

Which two statements best describe DMVPN? Select two.

- A.enables AES encryption
- B.enables dynamic meshIPSec/GRE tunnels between spoke sites
- C.relies on NHRP
- D.uses the Tunnel Endpoint Discovery protocol
- E.allows the customer edge (CE) routers to implement Multi-VRF functionality

Answer: B, C

QUESTION 198:

Which two routers can act as an EZ VPN remote server? (Choose Two)

- A.801
- B.804
- C.1710
- D.2610

Answer: C, D

QUESTION 199:

Which two Cisco routers can act as EZ VPN remote server?

- A.801
- B.804
- C.1710
- D.2610

Answer: C, D

QUESTION 200:

The new AIM-VPN module for the Cisco Integrated Services Router provides how many times better performance than the previous AIM-VPN modules?

- A.2
- B.4
- C.10
- D.15
- E.20

Answer: C

QUESTION 201:

What are the two nodes of operation for the EZ VPN Remote? (Choose two)

- A.Client mode with NAT/PAT
- B.Client mode without NAT/PAT
- C.Network Extension mode with PAT
- D.Network Extension mode without PAT

Answer: A, D

http://www.cisco.com/en/US/netsol/ns340/ns394/ns171/ns27/networking_solutions_white_papers_list.html
-clientmode :Traffic from the remote host is forwarded after applying Network Address Translation/Port Address Translation (NAT/PAT).
-Network Extensionmode :Addresses of the remote hosts are routable on the network without applying NAT/PAT.

QUESTION 202:

Which two routers can act as an EZ VPN remote client? (Choose Two)

- A.Cisco 801
- B.Cisco 806
- C.Cisco 1710
- D.Cisco 2610

Answer: B, C

QUESTION 203:

Type the MLS-SE command used on the Catalyst 5000 that displays the contents of the MLS cache. (Do not use abbreviated syntax)

Answer: showmlsentry

QUESTION 204:

What does an MLS-SE do when it receives an MLSP hello message?

- A. Responds with another MLSP hello message.
- B. Forwards it based on its multicast configuration.
- C. Records the MAC addresses and VLAN IDs in its CAM table.
- D. Discards it because MLSP messages are intended for MLS-RPs.

Answer: C

QUESTION 205:

Indicating with (1) MED, (2) local-preference, (3) AS-path, (4) weight and (5) origin-code, what is the correct chronological order of the previous five tiebreakers used by BGP during its own best route selection's process?

- A. 1,2,3,4,5
- B. 4,1,2,5,3
- C. 4,2,3,5,1
- D. 4,3,1,5,2
- E. 1,4,3,2,5

Answer: C

QUESTION 206:

On a Catalyst 5000, what is the purpose of the showmlsentry command?

- A. Displays the contents of the MLS cache.
- B. Shows the routing table for the MLS-RP.
- C. Shows the total number of packets switched.
- D. Displays all known MLS-RP and associated information.

Answer: A

QUESTION 207:

On a Catalyst 5000, which command displays an MLS flow based on the IP address of the sending host?

- A. showmls cache ip-address
- B. showmlsentry rp ip-address
- C. showmls cache entry ip-address
- D. showmls flow source ip-address
- E. showmlsentry source ip-address

Answer: E

QUESTION 208:

Which command on the Catalyst 5000 MLS-SE displays the ID of an attached MLS-RP router?

- A.showmls
- B.showmlsid
- C.showmlsentry ip-address
- D.showmlsentryrpi-address

Answer: A

QUESTION 209:

Which Catalyst 5000 command causes short-lived flows to age out of the MLS cache more quickly?

- A.ipmlsagefast
- B.ipmlsagingtime
- C.setmlsagingtime
- D.setmlsagingtimefast

Answer: D

QUESTION 210:

What is the result of applying an outgoing access list on an interface?

- A.It results in no action taken by the MLS-SE.
- B.It causes all incoming packets to be processed by the MLS-RP.
- C.It purges entries for flows on that interface and does not record new entries.
- D.It forces the MLS-SE to purge all MLS cache entries and to re-learn existing flows.

Answer: D

QUESTION 211:

Which three actions configure multilayer switching on the multilayer switching route processor? (Choose three)

- A.Enabling MLSP
- B.Setting the MLS aging time
- C.Including an external MLS-RP
- D.Assigning a VLAN ID to an interface
- E.Configuring the MLS management interface

Answer: A, D, E

QUESTION 212:

Which action disables multilayer switching?

- A. Enabling IP security
- B. Clearing the MLS cache
- C. Configuring an output access list.
- D. Disabling TCP header compression

Answer: A

QUESTION 213:

Which three are primary components of the Cisco multilayer switching implementation? (Choose three)

- A. Multilayer Trunking Protocol
- B. Multilayer Switching Protocol
- C. Multilayer Switching Cache Engine
- D. Multilayer Switching Switch Engine
- E. Multilayer Switching Route Processor

Answer: B, D, E

QUESTION 214:

Which interface configuration command assigns a VLAN ID to a route processor interface?

- A. mlsvlanvlan-id-number
- B. setmlsvlanvlan-id-number
- C. mls rp vlan-id vlan-id-number
- D. setmlsvtp-domainvlan-id number

Answer: C

QUESTION 215:

Which command enables multilayer switching globally on the MLS-RP?

- A. mlsrpi
- B. mlsenable
- C. mlsrpvtp-domain
- D. mlsrpmanagement-interface

Answer: A

QUESTION 216:

What is a characteristic of a static VLAN membership assignment?

- A. VMPS server lookup
- B. easy to configure

- C.ease of adds, moves, and changes
- D.based on MAC address of the connected device

Answer: B

QUESTION 217:

What command is used on a Cisco IOS switch to assign a port to a VLAN?

- A.switchportmode access
- B.switchporttrunk access
- C.switchportaccessvlan
- D.switchportvlan

Answer: C

QUESTION 218:

You are configuring a VLAN interface on an internal route processor. You defined the VLAN interface. What should you do next?

- A.define the network number
- B.define the default gateway
- C.assign IP routing to the interface
- D.assign a unique IP address to the interface

Answer: D

QUESTION 219:

Catalyst switches support which two methods of assigning members to VLANS? (Choose two.)

- A.static VLANs
- B.dynamic VLANs
- C.automatic VLANs
- D.host-based VLANs
- E.source-based VLANs

Answer: A, B

QUESTION 220:

When do you modify a VLAN name on a switch? (Choose two.)

- A.when the VTP mode on the switch is client
- B.when the VTP mode on the switch is server
- C.when the VTP mode on the switch is transparent
- D.when the VTP mode on the switch is pass-through

Answer: B, C

QUESTION 221:

Which of the following guidelines is not necessary when configuring dynamic VLAN membership?

- A. Configure VTPS server.
- B. Turn off trunking on the port.
- C. Turn off 802.1X port security.
- D. Configure the spanning-tree portfast feature.

Answer: D

QUESTION 222:

What is the next step after configuring a static VLAN?

- A. define switch-port speed
- B. enable IP routing for inter VLAN routing
- C. assign switch-ports to the newly defined VLAN
- D. configure VTP domain for transparent VTP mode

Answer: C

QUESTION 223:

Which of the following is not necessary when configuring dynamic Vlan membership?

- A. Configure VTPS server
- B. turn off trunking on the port
- C. turn of 802. 1X
- D. configuring spanning port fast

Answer: D

QUESTION 224:

Which implementation of SPAN is designed to support source ports, source VLANs, and destination ports across different switches?

- A. RVSPAN
- B. MSPAN
- C. VSPAN
- D. RSPAN

Answer: D

QUESTION 225:

You have changed the VTP domain on all your switches. You want to add an interface to the new VTP domain.

Which command should you use on your external route processor?

- A.set domainvtp
- B.mlsrpvtp-domain
- C.setmlsvtp-domain
- D.mlsext domainvtp

Answer: B

QUESTION 226:

You want to change VLAN information WITHOUT modifying other switches in the same VTP domain. To which mode should VTP be set?

- A.Client
- B.Local
- C.Server
- D.Transparent

Answer: D

QUESTION 227:

What command will specify IEEE 802.1Q as the encapsulation method for trunk port on a Cisco IOS switch?

- A.Switch(config-if)#switchporttrunk encapsulation dot 1q
- B.Switch(config-if)#switchporttrunk encapsulation is1
- C.Switch(config-if)#switchportencapsulation dot 1q
- D.Switch(config)#switchport0/1 trunk encapsulation is1

Answer: A

QUESTION 228:

Which prerequisite must be met on a Cisco switch prior to configuring VLANs?

- A.anRSM must be present.
- B.IP routing must be enabled.
- C.A VTP domain must be configured.
- D.The switch must be equipped with an MSFC.

Answer: C

QUESTION 229:

How do you specify the trunking encapsulation for a port on a Catalyst 3500XL switch?

- A.Switch(config)#vtpmode

- B.Switch(config-if)#set trunk
- C.Switch(config-if)# encapsulation
- D.Switch(config-if)#switchporttrunk encapsulation

Answer: D

QUESTION 230:

Which switch command enables a trunking protocol that appends a fourbyte CRC to the packet?

- A.Switch (config-if)#switchporttrunkencapsulation dot1q
- B.Switch (config-if)#switchporttrunkencapsulationitf
- C.Switch (config-if)#switchporttrunk encapsulationfddi
- D.Switch (config-if)#switchporttrunkencapsulationisl

Answer: D

QUESTION 231:

You must configure an Ethernet trunk between two Cisco switches.

Which three statements about the trunk link are true? (Choose three)

- A.The link may be 100 Mbps or faster.
- B.The link may use ISL and be point-to-point.
- C.The link may use the 802.1Q trunk protocol and be point-to-point.
- D.The link may use the 802.10 trunk protocol, providing the SAID parameter is correctly set.

Answer: A, B, C

QUESTION 232:

Which command do you use to check the trunking mode on Catalyst 3500XL switches?

- A.show trunk
- B.showvtpmode
- C.show interface
- D.show interfaceswitchport

Answer: D

QUESTION 233:

You must configure an Ethernet trunk to operate in ISL mode between two Cisco switches.

Which two are required at each end of the link for the trunk to operate correctly? (Choose two)

- A.An identical VTP mode.
- B.An identical speed/duplex.
- C.An identical trunk negotiation parameter.
- D.An identical trunk encapsulation parameter.

Answer: B, D

QUESTION 234:

How do you specify the trunking encapsulation mode for a port on a Catalyst 5000 switch?

- A.set trunk
- B.setvtpmode
- C.set port mode
- D.set encapsulation

Answer: A

QUESTION 235:

How do you specify the trunking encapsulation for a port on a Catalyst 3500XL switch?

- A.Switch(config)#vtpmode
- B.Switch(config-if)#set trunk
- C.Switch(config-if)#encapsulation
- D.Switch(config-if)#switchporttrunk encapsulation

Answer: D

QUESTION 236:

Which command do you use to check the trunking mode on Catalyst 5000 switches?

- A.show port
- B.show trunk
- C.showvtpdomain
- D.show encapsulation

Answer: B

QUESTION 237:

You have several VLAN trunks in Auto and Off modes.

You are entering a new port. You want the port to be in Permanent Trunking mode.

Which mode should you use?

- A.Off
- B.Auto
- C.Desirable
- D.Nonegotiate

Answer: D

QUESTION 238:

Which command line should you use to configure a port as a trunk port on a Catalyst 3500XL switch?

- A.Switch(config)#vtpmode
- B.Switch(config-if)#set trunk
- C.Switch(config-if)#encapsulation
- D.Switch(config-if)#switchportmode trunk

Answer: D

QUESTION 239:

```
interfacegigetherne0/1
switchportmode trunk
switchporttrunk encapsulation dot1q
switchporttrunk nativevlan5
```

Given the configuration, which statement is correct about untagged frames arriving on interface gigetherne0/1?

- A.They are automatically assumed to be in VLAN 5.
- B.They are defaulted to VLAN 1 traffic.
- C.They are dropped because all packets are tagged when dot1qtrunked.
- D.They are determined on the other switch.

Answer: A

QUESTION 240:

Which command removes certain VLANs from an existing trunk?

- A.setvlan
- B.clearvtp
- C.clear port
- D.clear trunk

Answer: D

QUESTION 241:

What are three valid combinations of trunk modes for ports configured a link parameter (Choose three.)

- A.On/On
- B.On/Auto
- C.Auto/Auto
- D.Desirable/Auto
- E.Nonegotiate/Desirable

Answer: A, B, D

QUESTION 242:

You are configuring a VLAN trunk with Fast Ethernet. Which trunking mode enables the port to become a trunk if the link partner requests it?

- A.Auto
- B.Negotiate
- C.Designate
- D.Nonegetiate

Answer: A

QUESTION 243:

What are three disadvantages of a router-on-a-stick configuration for InterVLAN routing? (Choose three)

- A.InterVLAN routing cannot be filtered by the router.
- B.The router becomes a single point of failure for the network.
- C.Routers will not route STPBPDUs.
- D.There is a possibility of inadequate bandwidth for each VLAN.
- E.Additional overhead on the router can occur.
- F.NetFlowSwitching is required for InterVLAN accounting.

Answer: B, D, E

QUESTION 244:

You are configuring a VLAN interface on an internal route processor. You defined the VLAN interface. What should you do next?

- A.Define the network number.
- B.Define the default gateway.
- C.Assign IP routing to the interface.
- D.Assign a unique IP address to the interface.

Answer: D

QUESTION 245:

Which command removes certain VLANs from an existing trunk link?

- A.setvlan
- B.clearvtp
- C.clear port
- D.clear trunk

Answer: D

QUESTION 246:

Where can you modify a VLAN name on a switch? (Choose two)

- A. When the VTP mode on the switch is client.
- B. When the VTP mode on the switch is server.
- C. When the VTP mode on the switch is transparent.
- D. When the VTP mode on the switch is pass-through.

Answer: B

QUESTION 247:

What are the three default port settings in a Catalyst switch? (Choose three)

- A. The MTU is set to 1500.
- B. The speed is set to 100.
- C. The duplex mode is set to full.
- D. All ports are assigned to VLAN 1.
- E. The VLAN type is set to Ethernet.

Answer: A, D, E

Speed and duplex it set to auto be default.

QUESTION 248:

What Cisco switch command will map VLANs 10 to 20 to MST instance 1?

- A. Switch(config)#vlan10-20 instance1
- B. Switch(config-mst)#vlan10-20 instance 1
- C. Switch(config)#instance 1vlan10-20
- D. Switch(config-mst)#instance 1vlan10-20

Answer: D

QUESTION 249:

Which command defines interesting packet to trigger DDR

Answer: dialer-list

QUESTION 250:

In DDR environment, how can you hold packets that accumulate while waiting for the line to come up?

- A. Use the hold-queue command.
- B. Use the no fair-queue command.
- C. Use the dialer hold-queue command.
- D. Use the dialer wait-for-carrier-time command.

Answer: C

QUESTION 251:

What does the fast-idle command specify in a DDR environment?

- A.the amount of idle time before dropping link on a line with contention
- B.the amount of idle time before dropping link on a line with no contention
- C.the amount of idle time before dropping link on a line with no interesting packets sent
- D.the amount of idle time before dropping link on a line with no interesting packets received

Answer: A

QUESTION 252:

Which three of the following router IOS commands defines "interesting" traffic for only one host using dial on demand routing (DDR)? Select three.

- A. Certkiller RTR(config)#dialer-list 1 protocol ip permit 10.1.1.1
- B. Certkiller RTR(config)#access-list 2 permit host 192.168.1.12
- C. Certkiller RTR(config)#dialer-group 1
- D. Certkiller RTR(config)# dialer-group 2
- E. Certkiller RTR(config)#dialer-list 1 protocol ip list 2
- F. Certkiller RTR(config)# dialer-list 2 protocol ip permit

Answer: B, C, E

B=access list for identifies host

C=dialer group with dialer list number 1 in this case

E=dialer list 1 define "interesting" packet types

D is incorrect because documentation give dialer group

QUESTION 253:

Which command is used to specify protocols for incoming asynchronous dial-up connections?

- A.modem inout
- B.async-group in
- C.access-groupasync
- D.transport input

Answer: D

QUESTION 254:

Which command is used to specify protocols for incoming asynchronous dial-up connections?

- A.modem inout
- B.async-group in
- C.access-groupasync
- D.transport input

Answer: D

QUESTION 255:

What are four PPP options that are negotiated using LCP? (Choose four.)

- A.callback
- B.multilink
- C.accounting
- D.compression
- E.authorization
- F.authentication
- G.rate adaptation

Answer: A, B, D, F

QUESTION 256:

In which two instances do you need to configure the encapsulation PPP command on the physical interface (BRI PRI,async)? (Choose two)

- A.when the physical interface default is SLIP
- B.when you are using rotary groups for outgoing calls
- C.when you are using dialer pools and expect incoming calls
- D.when you are configuring directly on the physical interface, and it needs to run ***

Answer: C, D

QUESTION 257:

The dialer callback-secure command makes it so _____.

- A.all dial back calls will use data encryption
- B.only calls configured for call back can connect
- C.only CHAP authenticated calls can connect through a secure server
- D.only calls authenticated through a secure server (TACACS+) can connect through dial back

Answer: B

QUESTION 258:

Which is the advantage of running CHAP compared to PAP?

- A.It can authenticate ISDN dial**
- B.It can send hashed passwords.
- C.It can use a remote security server.
- D.It can use a local security database.

Answer: B

QUESTION 259:

What is the best description for the command "ppp authentication pap" when configured on both the calling and called router?

- A.one-way authentication
- B.two-way authentication
- C.one-way encrypted authentication
- D.two-way encrypted authentication

Answer: B

QUESTION 260:

What is the best description for the command ppp authentication pap when configured on both the calling and called router?

- A.One-way authentication
- B.Two-way authentication
- C.One-way encrypted authentication
- D.Two-way encrypted authentication

Answer: B

QUESTION 261:

Which Router command specifies the RADIUS server that will authenticate dial-up users?

- A.aaaRadius server
- B.Radius-server host.
- C.IP aaa radius host.
- D.aaaauthentication radius-server.

Answer: B

Ex.

```
radius-serverhost 172.22.53.201 auth-port 1645 acct-port 1646 key
```

cisco

!--- Radius-server host IP address and encryption key.

QUESTION 262:

Which command must be used inorderfor PPP authentication to work with a dialerprofile.

- A.dialer string
- B.dialer remote-name
- C.dialer pool-number
- D.dialer map

Answer: B

QUESTION 263:

LCP is responsible for the negotiation of which function?

- A.IP address
- B.modulo size
- C.error correction
- D.frequency on the link

Answer: C

QUESTION 264:

Which command must be used to in order for PPP authentication to work with a dialer profile?

- A.dialer string
- B.dialer remote name
- C.dialer pool member
- D.dialer map

Answer: C

QUESTION 265:

Which configuration command defines a rotary group ?

- A.dialer pool
- B.rotary-group
- C.interface rotary
- D.interface dialer
- E.dialer rotary-group

Answer: D

QUESTION 266:

Multilink PPP can improve throughput and reduce latency by using which two features? (Choose two.)

- A.adding 8 kbps to each B channel for 16 kbps in-band management
- B.load balancing based on an XOR of the Layer 2 addresses in the packets
- C.bandwidth aggregation by splitting packets and sending the fragments over parallel circuits.
- D.Initializing the second B channel when the first B channel reaches a specified bandwidth utilization

Answer: C, D

QUESTION 267:

Which IOS command specifies the point at which additional B channels are added to the Multilink?

- A.bandwidth

- B.ppp multilink
- C.demand threshold
- D.dialer load-threshold

Answer: D

QUESTION 268:

Which two statements are true about Multilink PPP? (Choose two.)

- A.It uses packets sequences and load calculation.
- B.It has multi-vendor interoperability, as specified by RFC 1990.
- C.It implements an indexing system that predicts character sequences.
- D.It compresses the 20 byte IP header to a 2 or 4 byte header to reduce overhead.

Answer: A, B

QUESTION 269:

Which configuration command defines a rotary group?

- A.dialer pool
- B.rotary-group
- C.interface rotary
- D.interface dialer
- E.dialer rotary-group

Answer: E

QUESTION 270:

Multilink PPP can improve throughput and reduce latency by using which two features? (Choose two)

- A.Adding 8 kbps to each B channel for 16 kbps in-band management.
- B.Load balancing based on an XOR of the Layer 2 addresses in the packets.
- C.Bandwidth aggregation by splitting packets and sending the fragments over parallel circuits.
- D.Initializing the second B channel when the first B channel reaches a specified bandwidth utilization.

Answer: C, D

QUESTION 271:

Which two statements are true about Multilink PPP? (Choose two)

- A.It uses packet sequence and load calculation.
- B.It has multi-vendor interoperability, as specified by RFC 1990.
- C.It implements an indexing system that predicts character sequences.
- D.It compresses the 20 byte IP header to a 2 or 4 byte header to reduce overhead.

Answer: A, B

QUESTION 272:

Which IOS command specified the point at which additional B channels are added to the Multilink bundle?

- A.bandwidth
- B.ppp multilink
- C.demand threshold
- D.dialer load-threshold

Answer: D

QUESTION 273:

Which two commands assign multiple ISDN BRI interfaces to a single hunt group? (Choose two)

- A.dialer-group
- B.multilink ppp
- C.interface dialer
- D.dialer hunt-group
- E.dialer rotary-group

Answer: A, E

QUESTION 274:

What would the following command set on a router?

```
router(config)#interface group-async 1  
router(config)#group-range 1 7
```

- A. assigns asynchronous interfaces 1 through 7 to a single master interface
- B. assigns dialer privileges to interfaces async 1 through 7
- C. creates virtual asynchronous interfaces 1 through 7
- D. creates virtual TTY interfaces 1 through 7
- E. trunks asynchronous interfaces to increase modem bandwidth
- F. creates a modem pool on interfaces 1 through 7

Answer: A

QUESTION 275:

Instead of purchasing dedicated router ports, Certkiller .com wants to reduce costs by allowing any one of the available BRI interfaces on a central router to dial out to remote branch offices.

Which two commands provide this capability? Select two.

- A.dialer-group
- B.multilink ppp
- C.interface dialer
- D.dialer hunt-group

E.dialer rotary-group

Answer: C, E

QUESTION 276:

Given the configuration:

access-list101 permit ip anyany

access-list101 denytcpnyanyeqftp

dialer-list 2 protocol ip list 101

Which two statements about the configuration are true with respect to FTP traffic and DDR? (Choose two)

A.FTP traffic will be forwarded.

B.FTP traffic will not be forwarded.

C.FTP will cause the line to come up.

D.Since FTP uses two sockets, both mostbedefined to prevent packet forwarding.

Answer: A, C

QUESTION 277:

What is the significance of the number 128 in the fair-queue 128 router command?

A.It is the priority value for the interface.

B.It is the minimum bandwidth level for the queue.

C.It is the maximum bandwidth allocation for the queue.

D.It is the number of queues that will be allocated from memory.

E.It is the maximum number of messages that will be queued for a traffic type.

Answer: E

QUESTION 278:

Which three tasks should you perform when configuring Custom Queuing on a router? (Choose three)

A.Set custom queue filtering for an interface.

B.Configure the service threshold per queue.

C.Assign the custom queue list to an interface.

D.Globally enable custom queuing on the router.

Answer: A, B, C

QUESTION 279:

Which three tasks should you perform when configuring Custom Queuing on a router? (Choose three)

A.Assign a default custom queue.

B.Set custom queue filtering for a protocol.

C.Configure the service threshold per queue.

D. Globally enable custom queuing on the router.

Answer: A, B, C

QUESTION 280:

Which router command configures Weighted Fair queuing on a router?

- A. router(config)# bandwidth 56
- B. router(config)# fair-queue 64
- C. router(config)# priority fair 8
- D. router(config-if)# fair-queue 128
- E. router(config-if)# priority fair 16

Answer: D

QUESTION 281:

Which command associates a map class with an interface or subinterface when configuring frame relay traffic shaping?

- A. frame-relay map
- B. frame-relay class
- C. map-class frame-relay
- D. frame-relay map-class
- E. map frame-relay class

Answer: B

QUESTION 282:

Which functions enable load sharing through NAT? (Choose two.)

- A. enable TCP load distribution
- B. map the protocol ports that will be used
- C. create DNS entries for the inside addresses
- D. map an outside address to a group of inside addresses
- E. configure each server with the group of inside addresses

Answer: A, D

QUESTION 283:

Which router interface configuration command identifies an inside NAT interface?

- A. ip nat inside
- B. ip nat map inside
- C. ip address inside
- D. ip nat permit inside

Answer: A

QUESTION 284:

Exhibit:

```
ipnatpool nat1 61.56.2.1 61.56.2.254
```

```
netmask255.255.255.0
```

```
ipnatinside source list 1 pool nat1
```

```
!
```

```
interfaceEthernet0
```

```
ipaddress 10.1.1.10 255.255.255.0
```

```
ipnatinside
```

```
!
```

```
interfaceSerial10
```

```
ipaddress 75.15.2.1 255.255.255.0
```

```
ipnatoutside
```

```
!
```

```
access-list1 permit 10.1.1.0 0.0.0.255
```

Which NAT configuration is shown in the exhibit?

A.Static

B.Dynamic

C.Overlapping

D.Overloading

E.TCP Load Distribution

Answer: B.

QUESTION 285:

Which two are valid parameters to the "ipnatpool" command on a router? (Choose two)

A.netmask

B.source static

C.prefix-length

D.inside/outside

Answer: A, C

Note: ipnatpool name start-ip end-ip {netmasknetmask|prefix-lengthprefix-length}[type rotary]

QUESTION 286:

You enter the set ip route command to configure a default route in which platform?

A.Catalyst 2900XL

B.Catalyst 3500XL

C.Catalyst 5000

D.Catalyst 12000

Answer: C

QUESTION 287:

The BGP backdoor command:

- A.Changes the distance of an iBGP route to 20.
- B.Changes the distance of an eBGP route to 200.
- C.Changes the distance of an IGP route to 200.
- D.Changes the distance of an IGP route to 20.
- E.Does not change the distance of the route.

Answer: B

QUESTION 288:

What is the function of the command `bgp deterministic-med`?

- A.It makes BGP compare MEDs between different ASs.
- B.It makes default metric count as the worst possible metric.
- C.It makes default metric count as the best possible metric.
- D.It records the entries by neighbor AS.
- E.It records the entries by MED.

Answer: D

QUESTION 289:

You are using the CRWS tool to set up EZ VPN.

Which type of connection type for the VPN will be created?

- A.Manual
- BAutomatic
- C.Temporary
- D.Permanent

Answer: B

QUESTION 290:

You have CRWS to set up on auto EZ VPN connection using client mode with PAT. Which statement is true about the connection?

- A.The connection uses the IP address of the outside interface to base the PAT address on and uses all other physical interface configurations.
- B.The connection ignores the physical outside address and use addresses from the server for both the inside and outside addresses.
- C.The connection uses the IP address of the outside interface to base the PAT address on and uses server - supplied addresses for the inside interface and workstations.

D.The connection ignores the outside IP address and use one supplied by the server, while the inside addresses are used from the physical DHCP configuration of the client router.

Answer: D

QUESTION 291:

EZ VPN is configured in Client mode with auto connection.

What is the behavior of the router when the VPN connection is down but the router is still operational and attached to the Internet?

- A.The router has no connection since the VPN is down.
- B.The router will permit Internet access but continues to attempt to attach to the VPN.
- C.The user cannot get out to the Internet because the router continues to attempt to attach to the VPN.
- D.The router works normally and the VPN connection is dormant until the user initiates the VPN again.

Answer: D

QUESTION 292:

In an EZ VPN remote client configuration ?ts often neccessary to configure a DHCP pool on the client router . Within this pool what DHCP pool sub command is used to pull DNS information for pool from an outside source when this information will not be known prior to use?

- A.import DNS
- B.import all
- C.extract DNS
- D.extract all

Answer: B

QUESTION 293:

EZ VPN is configured in Client mode with manual connection.

What is the behavior of the router when the VPN connection is down but the router is still operational and attached to the Internet?

- A.The router has no connection since the VPN is down.
- B.The router will permit Internet access but continues to attempt to attach to the VPN.
- C.The user cannot get out to the Internet because the router continues to attempt to attach to the VPN.
- D.The router works normally and the VPN connection is dormant until the user initiates the VPN again.

Answer: D

QUESTION 294:

Whichtwo commands could you use to view a new entry to the modemcapability database on a fixed chassis 8-port asynchronous accessserver? (Choose two)

- A. modem entry

- B. showmodemcap
- C. show modem entry
- D. show running-config
- E. show entrymodemcap

Answer: B,D

Note: showmodemcap To display the values set for the current modem, use the showmodemcap command. This display lists the modems for which the router has entries. To display the attributes associated with a specific modem, use the showmodemcap modem-name command. Show running-config cut modemcap entry lasat:FD=&FM1L2S7=55:HFL=&K3:SPD=&Q6:BCP=%C3:NER=&Q0:TPL=default-cut-

QUESTION 295:

Which two debugs should you use to find the cause of an unsuccessful PAP negotiation? (Choose two)

- A. debug ppp pap
- B. debug ppp negotiation
- C. debug authentication pap
- D. debug ppp authentication

Answer: B, D

QUESTION 296:

What does authentication proxy on the Cisco IOS Firewall do?

- A. Creates specific authorization policies for each user with Cisco Secure ACS, dynamic, per-user security and authorization.
- B. Provides additional visibility at intranet, extranet, and Internet perimeters.
- C. Creates specific security policies for each user with Cisco Secure ACS, dynamic, per-user authentication and authorization.
- D. Provides secure, per-application access control across network perimeters.

Answer: C

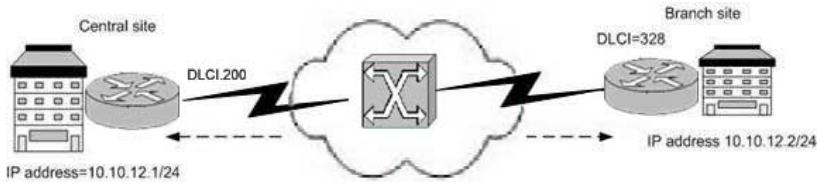
QUESTION 297:

Which command displays the number of successful and failed calls?

- A. show dialer
- B. show interface
- C. show isdn q931
- D. show isdn active call

Answer: A

QUESTION 298:



From the figure, which frame-relay-map command would configure a static address mapping from the central site to the branch site?

- A.frame-relay map ip 10.10.12.2 328 broadcastietf
- B.frame-relay map ip 10.10.12.2 200 broadcastcisco
- C.frame-relay map ip 10.10.12.1 200 broadcastcisco
- D.frame-relay map ip 10.10.12.1 328 broadcastietf

Answer: B

QUESTION 299:

Which statement describes a feature of aSwitchPortAnalyzer (SPAN) session?

- A.affect switching traffic on source ports
- B.associates a source interface with multiple destination interfaces
- C.eliminates multiple copies of packets
- D.associates multiple source interfaces with a single destination interface

Answer: D

QUESTION 300:

Which router command will display the number of BECN andFECNpacketstatistics for an interface?

- A.show interfaces
- B.show frame-relaypvc
- C.show frame-relay map
- D.show frame-relayImi

Answer: B

QUESTION 301:

Which two protocols about LMI autosensing are true?

- A.It is used to tell the router LMI
- B.It is only works type is Cisco
- C.It is involves sending full status request to the FR switch
- D.It is automatic detects CIR and PVC

Answer: A, D

QUESTION 302:

Which command displays the number of successful and failed calls?

- A.show dialer
- B.show interface
- C.show isdn q 931
- D.show isdn active call

Answer: A

QUESTION 303:

Which command displays the remote network addresses associated with each PVC?

- A.show ip route
- B.show frame-relay lmi
- C.show frame-relay map
- D.show frame-relay pvc
- E.show frame-relay status

Answer: C

Note: The following is sample output from the show frame-relay map command: Router# show frame-relay map
Serial 1 (administratively down): ip 131.108.177.177 dlci 177 (0xB1, 0x2C10), static, broadcast, CISCO TCP/IP
Header Compression (inherited), passive (inherited)

QUESTION 304:

Which commands displays information on multilink bundles that are active?

- A.show multilink
- B.show ppp status
- C.show mlppp status
- D.show ppp multilink
- E.show ppp negotiation

Answer: D

QUESTION 305:

Which router command shows the configuration of Fair Queuing?

- A.show queue
- B.show fair-queue
- C.show queue config
- D.show running-config

Answer: D

QUESTION 306:

The NAT/PAT translation and access-list configurations that are created by the Cisco EasyVPN Remote feature are not written to either the startup-configuration or running-configuration files.

Which two commands can you use to display these configurations? (Choose two)

- A.show access-lists
- B.show IP NAT Statistics
- C.show IP NAT Translations
- D.show access-list configuration

Answer: A, B

Cisco Partner Slide Presentation

QUESTION 307:

How many VLANs can a single RSM support?

- A.1
- B.16
- C.256
- D.1024

Answer: C

QUESTION 308:

Which device allows communication between VLANs?

- A.IP translator
- B.Route processor
- C.Switching engine
- D.VLANinterswitch

Answer: B

QUESTION 309:

How many VLANs can a single RSM support?

- A.1
- B.16
- C.256
- D.1024

Answer: C

QUESTION 310:

You need the flexibility to move routers around in a large enterprise. You also need to spend a little as possible as you grow, but you must have more power than a 3700.

Whichrouter makethe most economic sense for this type of growth?

- A.Cisco 7200
- B.Cisco 7300

- C.Cisco 7400
- D.Cisco 7500

Answer: C

QUESTION 311:

Which two routers are considered adequate replacement for the Cisco 3640?

- A.2650
- B.2691
- C.3725
- D.3745

Answer: C, D

QUESTION 312:

Certkiller .com needs a router that will provide 2 WIC slots an internal VPN card slot support for two ethernet of at least 10 base T and a redundant power supply. Which router is the lowest cost solution?

- A.1751
- B.1760
- C.2611 XM
- D.2621 X

Answer: C

QUESTION 313:

Which two routers are considered adequate replacement for the Cisco 3640? (Choose two)

- A.Cisco 2650
- B.Cisco 2691
- C.Cisco 3725
- D.Cisco 3745

Answer: C, D

QUESTION 314:

Using the Cisco three level designstrategy, how many tiers are present in small campus networks?

- A.1
- B.2
- C.3
- D.4
- E.5

Answer: B

Small campus locations will likely have a two-tier design with wiring closet component (Ethernet access layer) and a backbone core (collapsed core and distribution layers).

http://www.cisco.com/en/US/netsol/ns340/ns394/ns147/ns17/networking_solutions_package.html

QUESTION 315:

Bridging LANs helps to reduce traffic in a CSMA/CD environment by reducing the size of the collision domain. However, it fails to address which problem?

- A. excessive CRC errors
- B. media-type mismatches
- C. flooding of BPDU frame
- D. excessive broadcast frame

Answer: D

QUESTION 316:

How do you configure redundancy with the firewall Services module?

- A. HSRP
- B. LAN failover
- C. Secondary IP address
- D. It is not possible

Answer: B

QUESTION 317:

What does the acronym VIP mean?

- A. Versatile Input Processor.
- B. Virtual Interface Processor.
- C. Variable Interface Processor.
- D. Versatile Interface Processor.

Answer: D

QUESTION 318:

Some Cisco Supervisor Engines have modular uplink ports so that a module can be selected to provide an appropriate level of bandwidth. Which two features are valid on a 2-port 1000Base SX or 1000Base LX modular uplink? (Choose two.)

- A. 10/100 Autosensing
- B. Fast EtherChannel
- C. ISL
- D. 802.1Q/p
- E. 1.3 rewrite

Answer: CD

QUESTION 319:

Which two types of cable does Gigabit Ethernet support? Select two.

- A. Cat-3 UTP
- B. Cat-5 UTP
- C. RG-58 coax
- D. 50 micron MMF
- E. 62.5 micron SMF

Answer: B, D

QUESTION 320:

Which two statements apply to a Cisco Catalyst switch with dual supervisor cards? (Choose two.)

- A. The supervisor engines must be the same model.
- B. The active supervisor is selected by priority.
- C. The active supervisor controls the system bus.
- D. The relevant protocols are active on the standby supervisor.
- E. The supervisor engines perform load sharing.

Answer: A, C

QUESTION 321:

You work as a network engineer at Certkiller .com. You are required to install a 160 branch Frame Relay network. You can not put more than 8 Frame Relay connections in one port due to bandwidth requirement. You must use T1 interfaces because the connection spans multiple carriers.

Which two Cisco routers are most appropriately used for this application?

- A. 7200
- B. 7300
- C. 7400
- D. 7500

Answer: A, D

QUESTION 322:

What does the autoselect feature of a Cisco access server allow?

- A. the termination of IP packets for routing
- B. a configured process to start automatically
- C. serial interfaces to sense incoming modem calls
- D. users to preselect which protocol they want to use

Answer: B

QUESTION 323:

Certkiller .com needs a router that will provide 2 WIC slots, an internal VPN card slot, support for two Ethernet of at least 10baseT, and a redundant power supply.

Which router is the lowest cost solution?

- A.Cisco 1751
- B.Cisco 1760
- C.Cisco 2611XM
- D.Cisco 2621XM

Answer: C

Note: Cisco 1751 and Cisco 1760 do not support redundant powersupply. The 2600 series can also operate from Redundant Power Supply (RPS). The PWR600-AC-RPS is a Cisco RPS for the 2500, 2600, 3600, and 4000 series routers.

QUESTION 324:

Which three statements are true about SPAN? (Choose three)

- A.A destination port can be a source port.
- B.A destination port can participate in only one SPAN session at a time.
- C.A destination port can be an EtherChannel group.
- D.A source port can be monitored in multiple SPAN sessions.
- E.A source port can be an EtherChannel group.
- F.A source port can be a destination port.

Answer: B, D, E

QUESTION 325:

You have been asked to provide a router with thirty 10/100 Ethernet interfaces and room for more for future growth. The router must also provide security in the form of firewalls for each Ethernet interface.

Which router should you install?

- A.Cisco 7206
- B.Cisco 7304
- C.Cisco 7513
- D.Cisco 7603

Answer: D

QUESTION 326:

Which Supervisor module is focused on a wiring closet scenario?

- A.Su1

B.Su1A
C.S2
D.S2A
E.S2U

Answer:

QUESTION 327:

Which Cisco product supports multilayer switching across SONET?

A.3550
B.6500
C.7600
D.8500

Answer: D

QUESTION 328:

Which is designed for use by service providers?

A.4003
B.4006-NEBs
C.6509-NEBs
D.6506 w/IOSver7

Answer: C

<http://www.cisco.com/en/US/products/hw/switches/ps708/ps712/index.html>

QUESTION 329:

Which module provides server monitoring capabilities?

A.IDS
B.NAM
C.VLAN
D.FlexWAN

Answer: B

Note:NAM(Network Analysis Module)

QUESTION 330:

Which router support voice cards ? (select two)

A.1710
B.1751
C.1720
D.1760

Answer: B, D

QUESTION 331:

What are the optional components of the 26 port HDSM?

- A.Power Daughter Card and one GE-TX port.
- B.Power Daughter Card and two GE-TX ports.
- C.Dual Power Daughter Card and one GE-TX port.
- D.Dual Power Daughter Card and two GE-TX ports.

Answer: B

Note:NMD-36-ESW-One 36-port 10/100EtherSwitchHigh Density Service ModuleNMD-36-ESW-PWR*-One 36-port 10/100EtherSwitchHDSM with Inline PowerNMD-36-ESW-2GIG-One 36-port 10/100EtherSwitch HDSM with 2 GE (1000BaseT)NMD-36-ESW-PWR-2G*-One 36-port 10/100EtherSwitchHDSM +Inline Power and 2GE

QUESTION 332:

You need a router that can provide WAN broadband Ethernet connectivity at 10baseT and a LAN connection at 10/100 including 802.1q trunking. It must provide an ADSL connection for backup should the Ethernet WAN interface fail.

Which Cisco router is the lowest cost solution?

- A.Cisco 1721
- B.Cisco 1760
- C.Cisco 2611XM
- D.Cisco 2621XM

Answer: A

QUESTION 333:

LongReach Ethernet(LRE) is based on ethernet over which type of DSL service ?

- A.ADSL
- B.IDSL
- C.HDSL
- D.VDSL

Answer: D

QUESTION 334:

Which of the following are valid framing types on a T1 controller?

(Choose Two)

- A.B8ZS
- B.SF

- C.HDB3
- D.ESF
- E.AMI

Answer: B, D

QUESTION 335:

Which T1 controller command is used to configure the controller for ISDN PRI operation?

- A.framing
- B.linecode
- C.pri-group
- D.isdn switch-type

Answer: D

QUESTION 336:

Which two WAN connections provide a single pre-established switched circuit reserved for the private use of the customer? Select two.

- A.digital cable
- B.T1 leased line
- C.ISDN
- D.asynchronous dial-in
- E.56K dedicated line

Answer: B, E

QUESTION 337:

Which two are T1/E1 line-code options? (Choose two)

- A.ESF
- B.AMI
- C.B8ZS
- D.CRC4

Answer: B, C

QUESTION 338:

Which statement about ISDN is true?

- A.The B channel is governed by DDR
- B. DSS1 operates as a subset of Q.931
- C. ITU-T Q.931 defines call control between the TE and the LE.
- D. ITU-T Q.931 is specified as the protocol for layer 2 of the ISDN D channel

Answer: C

Note: System processing of ISDN D-channel messages generally follows the International Telecommunications Union guidelines documented in ITU-T Q.931.

QUESTION 339:

Which command will change the specified Frame Relay encapsulation for specific PVC on an interface?

- A. no frame-relay encapsulationietf
- B. no frame-relay encapsulationcisco
- C. encapsulation frame-relayietf
- D. frame-relay map ip 10.160.2.1 100 broadcastietf

Answer: D

QUESTION 340:

Which of the following are valid framing types on a T1 controller? (Choose two.)

- A. b8zs
- B. sf
- C. hdb3
- D. esf
- E. ami

Answer: B, D

QUESTION 341:

Which IOS command is used to configure an interface for PRI and specify the number of fixed timeslots on the PRI circuit?

- A. pri-group
- B. dialer-group
- C. isdn switch-type
- D. interface serial

Answer: A

QUESTION 342:

Place the type of WAN protocols onto the appropriate description on the right.

Point-to-Point Protocol (PPP)	Point-to-point serial IP connections	Place here
Serial Line Internet Protocol (SLIP)	ITU-T standard protocol with error correction	Place here
High Level Data Link Control (HDLC)	Standards-based, host to network over async/sync connections	Place here
T 25	Proprietary router-to-router connections	Place here
Frame Relay	Internal standard cell switching protocol	Place here
Asynchronous Transfer Mode	High performance, packet switched protocol	Place here

Answer:

Point-to-point serial IP connections	Serial Line Internet Protocol (SLIP)
ITU-T standard protocol with error connections	X.25
Standards-based, host to network over async/sync connections	Point-to-Point Protocol (PPP)
Proprietary router-to-router connections	High Level Data Link Control (HDLC)
Internal standard cell switching protocol	Asynchronous Transfer Mode
High performance, packet switched protocol	Frame Relay

QUESTION 343:

Which are dedicated WAN design types?

- A.DSL, SMDS, and ISDN
- B.Modems, X.25, and ISDN
- C.Cable, SMDS, and modem
- D.Leased line, Frame Relay, and voice/data

Answer: D

Reference is Cisco Partners website.

QUESTION 344:

Match the six HSRP states in which an HSRP-enabled router can exist to their corresponding definitions.

Definitions	States, place here
Participates in the election for the active or standby router	<input type="text" value="Place here"/>
State from which the routers begin the HSRP process	<input type="text" value="Place here"/>
A candidate to become the next active router	<input type="text" value="Place here"/>
The router is still waiting to hear from the active router.	<input type="text" value="Place here"/>
The router is currently forwarding packets.	<input type="text" value="Place here"/>
Listens for hello messages from the active and standby router	<input type="text" value="Place here"/>

States, select from these	
<input type="text" value="Initial"/>	<input type="text" value="learn"/>
<input type="text" value="Listen"/>	<input type="text" value="Speak"/>
<input type="text" value="Standby"/>	<input type="text" value="Active"/>

Answer:

Defintions	States, place here
Participates in the election for the active or standby router	Speak
State from which the routers begin the HSRP process	Initial
A candidate to become the next active router	Standby
The router is still waiting to hear from the active router.	learn
The router is currently forwarding packets.	Active
Listens for hello messages from the active and standby router	Listen

States, select from these

QUESTION 345:

Which two of the following interfaces support both Cisco line power and 802.3af? (Choose two.)

- A. WIC
- B. VWIC
- C. HWIC
- D. NM
- E. NME

Answer: C, E

QUESTION 346:

When building an IP multicast domain using PIM which mode assumes that other routers do not want to forward multicast packets for the group?

- A. PIM-DM
- B. PIM-SM
- C. PIM-RP
- D. CGMP
- E. IGMP snooping

Answer: B

QUESTION 347:

Which method of Layer 3 switching uses a forwarding information base (FIB)?

- A. route caching
- B. flow-based switching
- C. demand-based switching
- D. topology-based switching

Answer: D

QUESTION 348:

Which protocol enables a group of routers to form a single virtual router and use the real IP address of a router as the gateway address?

- A.Proxy ARP
- B.HSRP
- C.IRDP
- D.VRRP
- E.GLBP

Answer: D

QUESTION 349:

Which Cisco command displays active Layer 3 sessions on an ISDN PRI connection, showing the call-type and B channel used?

- A.debug dialer
- B.show isdn status
- C.show dialer-group
- D.show dialer interface

Answer: B

QUESTION 350:

Which Cisco router is the highest performing 1 RU high router in the industry?

- A.1760
- B.2621
- C.3620
- D.7400

Answer: D

QUESTION 351:

Which statement best describes V3PN?

- A.enables triple AES encryption
- B.allows customers to divide a router into multiple independent address spaces and routing tables using Multi-VRF functionality.
- C.Enables dynamic mesh tunnels between sites
- D.Relies on NHRP
- E.Enables concurrent IPSec, QoS, and IP telephony

Answer: E

QUESTION 352:

Which two statements about LMI autosensing are true? (Choose two.)

- A. It is used to tell the router about LMI type.
- B. It only works if the Frame Relay type is cisco.
- C. It involves sending full status requests to the Frame Relay switch.
- D. It is used to automatically detect the Frame Relay CIR of each PVC.

Answer: A, C

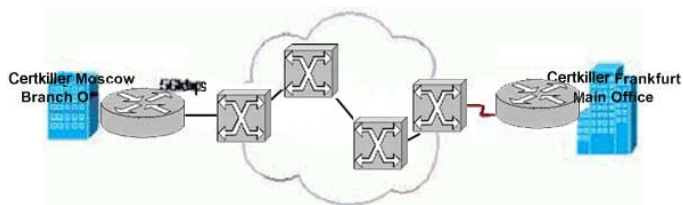
QUESTION 353:

Which statement best describes 802.3af?

- A. provides QoS tagging for voice packets
- B. enables call accounting and billing
- C. provides inline power to IP phones
- D. enables separate broadcast domains (voice VLANs) for IP phones
- E. enables VLAN tagging

Answer: C

QUESTION 354:



From the figure, which command would enable the central router to dynamically fluctuate the rate at which it sends packets to the branch site over the Frame Relay network?

- A. frame-relay traffic-rate adaptive
- B. frame-relay adaptive-shaping fecn
- C. frame-relay adaptive-shaping becn
- D. frame-relay traffic-rate dynamic

Answer: C

QUESTION 355:

Which IOS configuration command is used to define interesting packets to trigger a DDR call?

- A. dialer-list
- B. dialer-group
- C. dialer in-band
- D. dialer rotary-group

Answer: A

QUESTION 356:

What are three features of the VAM? (Choose three.)

A.compression

B.key generation

C.software assisted encryption

D.hardware assisted encryption

Answer: A, B, D